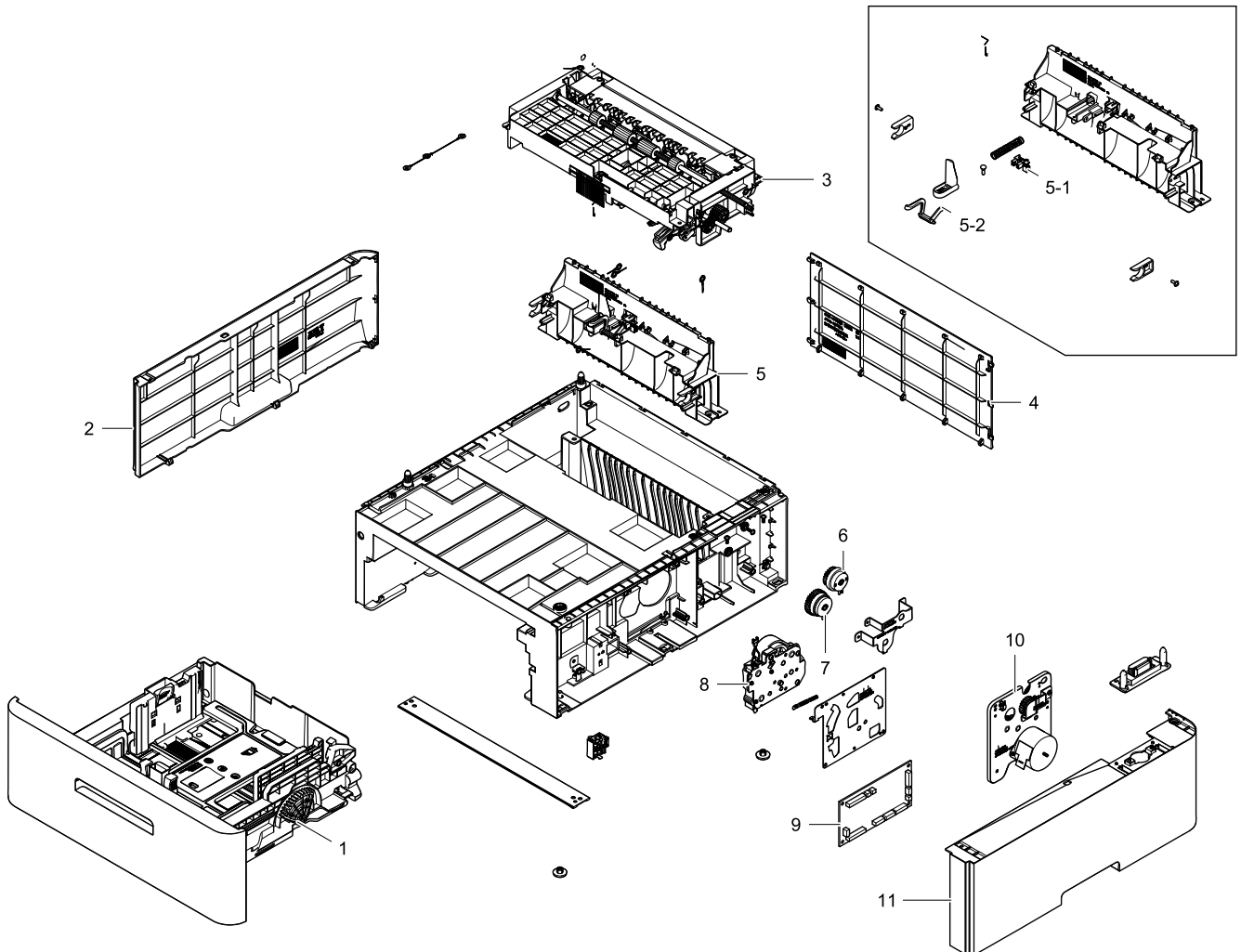


# 1. SCF MAIN

## Exploded View



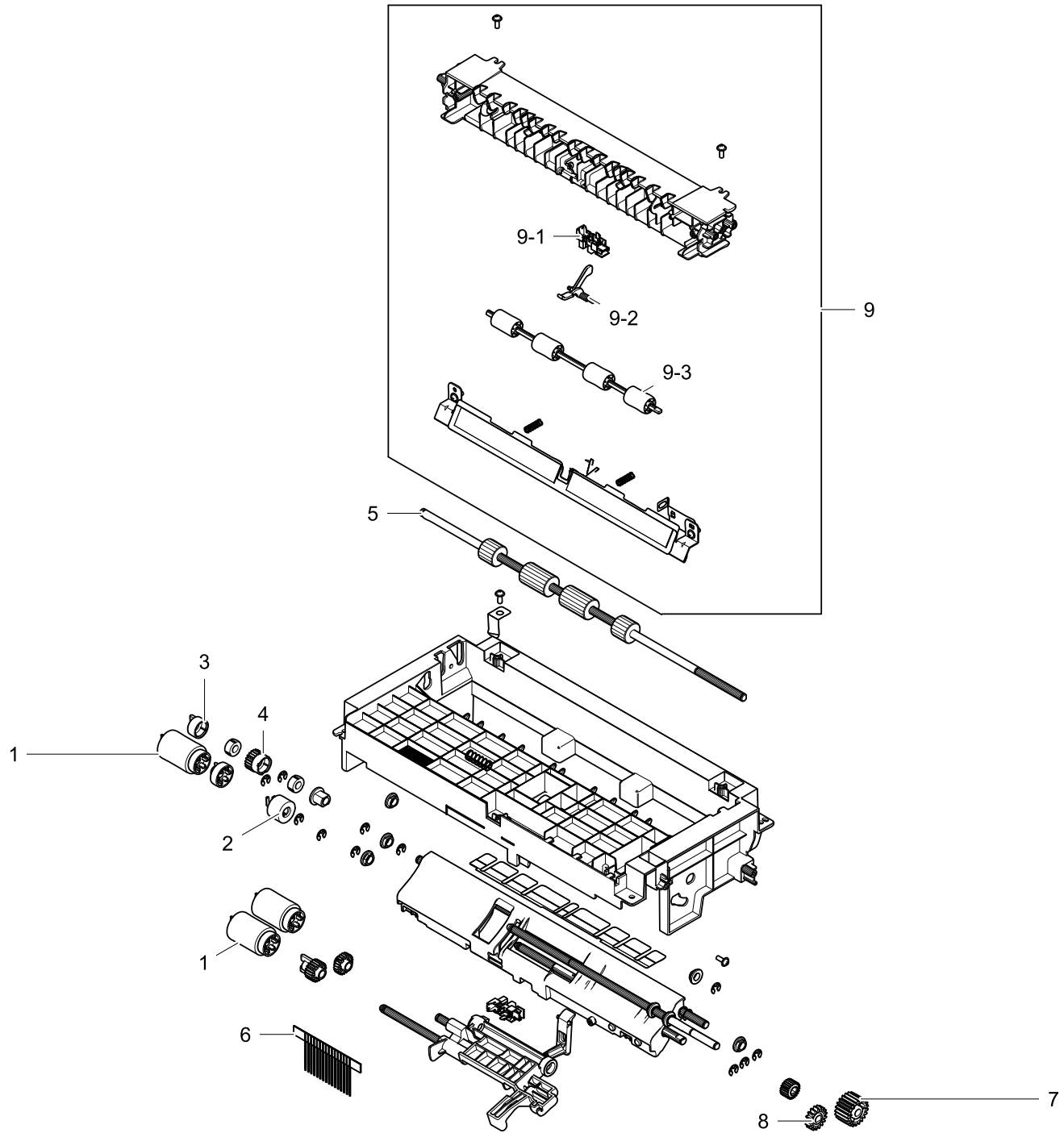
## Parts List

No.	Lvl.	Loc.	Material Code	Description & Specification	SNA	Qty.
1	2		JC82-00270A	A/S ASSY-CASSETTE; CLP-680ND,SEC	SNA	1
2	2		JC81-09516A	CSP-COVER LEFT; CLP-680ND,ABS HF-0660I	SNA	1
3	2		JC82-00317A	A/S ASSY-FRAME MIDDLE; CLP-S680A,SEC	SA	1
4	2		JC81-09517A	CSP-COVER REAR; CLP-680ND,ABS HF-0660I	SNA	1
5	2		JC82-00315A	A/S ASSY-FRAME SCF; CLP-S680A,SEC	SA	1
5-1	3		0604-001325	PHOTO-INTERRUPTER; TR,BK	SA	1
5-2	3		JC81-09666A	CSP-ACTUATOR EMPTY; CLP-680ND,POM	SA	1
6	2		JC47-00033A	CLUTCH-ELECTRIC; ML-3200ND,DC24V,125mA,Z2	SA	1
7	2		JC47-00034A	CLUTCH-ELECTRIC; ML-3710ND,DC24V,125mA,Z3	SA	1
8	2		JC93-00350B	DRIVE-FEED; CLP-S680A,SEC	SA	1

No.	Lvl.	Loc.	Material Code	Description & Specification	SNA	Qty.
9	2		JC92-02539A	PBA-SCF; CLX-6260FW,SEC,SCF,FR4,2L,130*70	SA	1
10	2		JC82-00316A	A/S ASSY-DRIVE; CLP-S680A,SEC	SA	1
11	2		JC81-09515A	CSP-COVER RIGHT; CLP-680ND,ABS HF-0660I	SNA	1

# 2. ASSY FRAME MIDDLE

## Exploded View

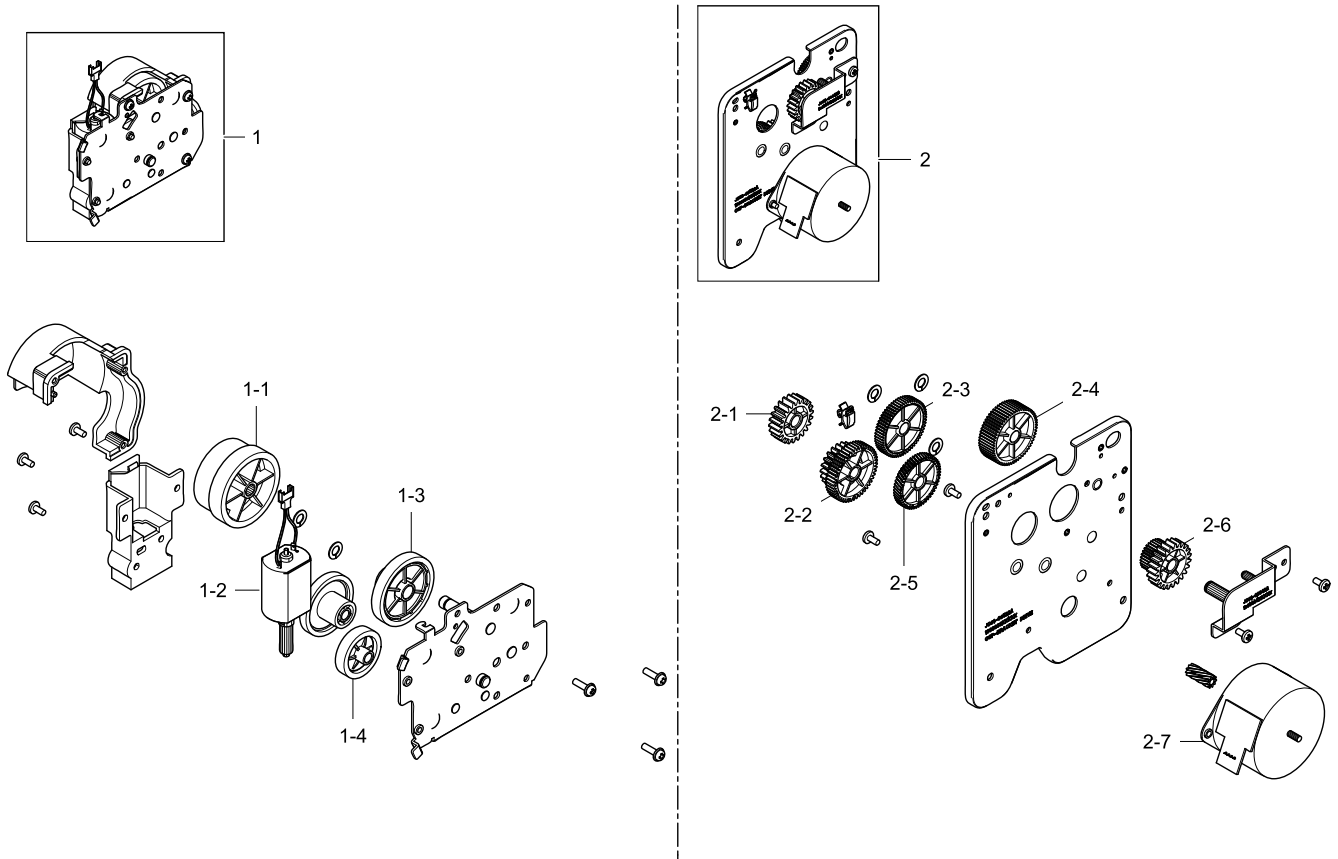


**Parts List**

No.	Lvl.	Loc.	Material Code	Description & Specification	SNA	Qty.
1	3		JC90-01191A	SCF-PICKUP; CLP-680,SEE	SA	3
2	3	H4196	JC67-00126A	COUPLER-TORQUELIMITER; SCX-6345N/XRX,OTLV	SNA	1
3	3	I7155	JC61-01288A	HOLDER-M_IDLE ONE WAY; SCX-6345N/XRX,POM,	SA	1
4	3	I5669	JC66-00941A	GEAR-M_ONE WAY; SCX-6345N/XRX,POM,0.7,21,	SA	1
5	3		JC81-09478A	CSP-ROLLER-FEED; CLP-680ND,SUM23 + EPDM	SA	1
6	3		JC67-00468A	BRUSH-PICK; ML-6510ND,SUS FIBER,35,71.7,N	SNA	1
7	3		JC81-09500A	CSP-GEAR Z21; CLP-680ND,POM M90-44	SA	1
8	3		JC81-09499A	CSP-GEAR Z17; CLP-680ND,POM M90-44	SA	1
9	3		JC82-00318A	A/S ASSY-FEED; CLP-S680A,SEC	SA	1
9-1	4		0604-001325	PHOTO-INTERRUPTER; TR,BK	SA	1
9-2	4		JC81-08460A	CSP-SCF ACTUATOR FEED; ML-6510ND,NATURAL	SNA	1
9-3	4	L4477	JC66-01022A	ROLLER-M_IDLE SCF; SCX-6345N/XRX,POM,OD14	SA	4

### 3. ASSY DRIVE and DRIVE-FEED

#### Exploded View

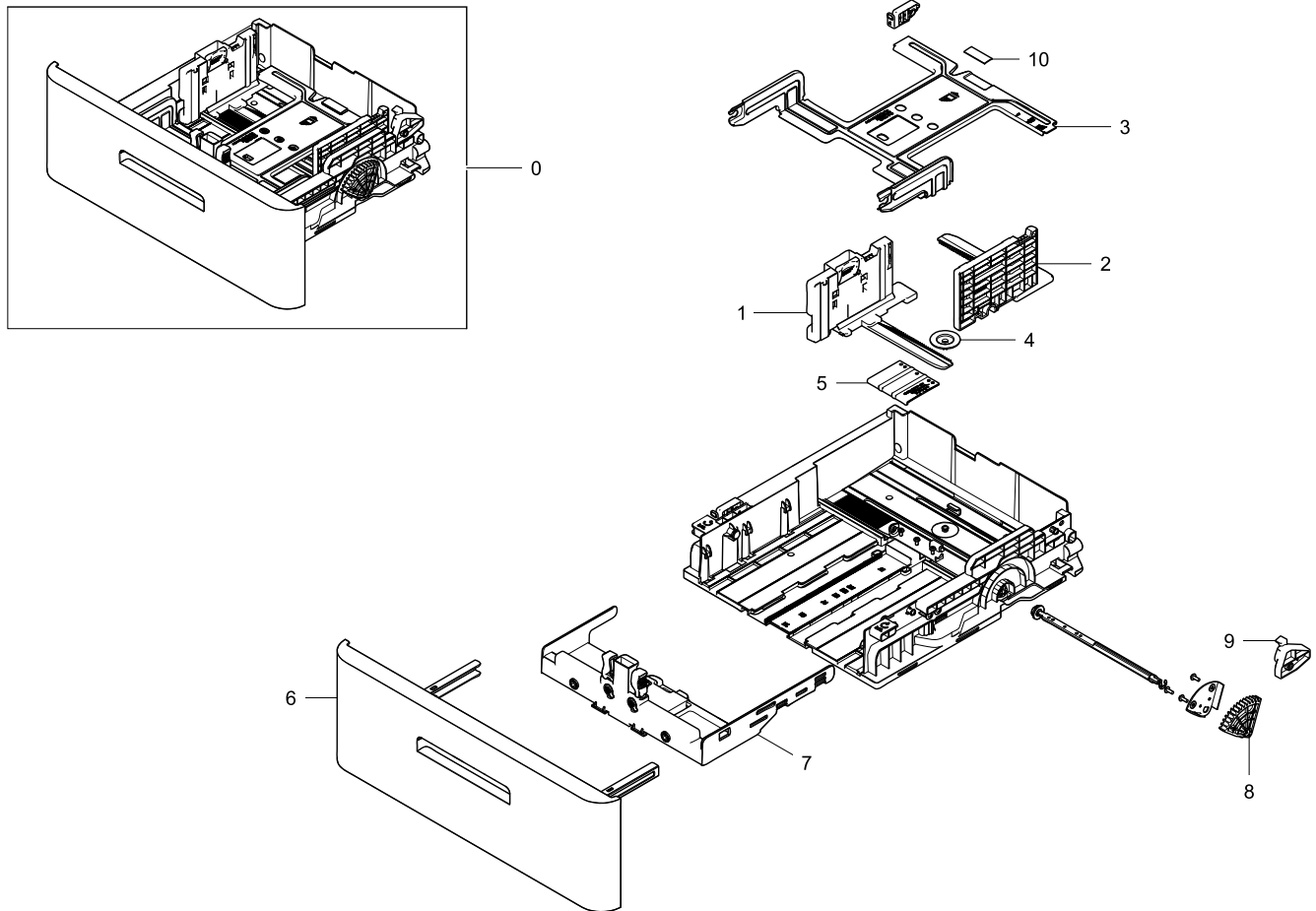


#### Parts List

No.	Lvl.	Loc.	Material Code	Description & Specification	SNA	Qty.
1	2		JC93-00350B	DRIVE-FEED; CLP-S680A,SEC	SA	1
1-1	3		JC66-02893A	GEAR-LIFT RDCN D; ML-5015ND,POM,0.8, 1.5,	SA	1
1-2	3	K1299	JC31-00078A	MOTOR DC; NF213G-1020515,DC24V,CLX-8380ND	SA	1
1-3	3		JC66-02892A	GEAR-LIFT RDCN C; ML-5015ND,POM,0.5, 0.8,	SA	1
1-4	3		JC66-02890A	GEAR-LIFT RDCN A; ML-5015ND,POM,0.6, 0.5,	SA	1
2	2		JC82-00316A	A/S ASSY-DRIVE; CLP-S680A,SEC	SA	1
2-1	3		JC66-00781A	GEAR-_M_EXIT IDLE; CLP-600,PBT,1,Z22,BROW	SA	1
2-2	3		JC81-09526A	CSP-GEAR Z49/21; CLP-680ND,POM M90-44	SA	1
2-3	3		JC81-09524A	CSP-GEAR Z60; CLP-680ND,POM M90-44	SA	1
2-4	3		JC81-09525A	CSP-GEAR Z60_9.6; CLP-680ND,POM M90-44	SA	1
2-5	3		JC81-09523A	CSP-GEAR Z52/24; CLP-680ND,POM M90-44	SA	1
2-6	3		JC81-09521A	CSP-GEAR Z23/31; CLP-680ND,POM M90-44	SA	1
2-7	3		JC82-00319A	A/S ASSY-MOTOR; CLP-S680A,SEC	SA	1

## 4. ASSY-CASSETTE

### Exploded View



### Parts List

No.	Lvl.	Loc.	Material Code	Description & Specification	SNA	Qty.
0	2		JC82-00270A	A/S ASSY-CASSETTE; CLP-680ND,SEC	SNA	1
1	3		JC82-00273A	A/S ASSY-CST-SIDE LEFT; CLP-680ND,SEC	SA	1
2	3		JC82-00274A	A/S ASSY-CST-SIDE RIGHT; CLP-680ND,SEC	SA	1
3	3		JC81-09494A	CSP-PLATE KNOCKUP; CLP-680ND,SECC 1.2T	SA	1
4	3	I5678	JC66-01020A	GEAR-M_PINION 24; SCX-6345N/XRX,POM,1,24,	SA	1
5	3		JC81-09488A	CSP-PLATE LEVER; CLP-680ND,SECC	SNA	1
6	3		JC82-00276A	A/S ASSY-CST-HANDLE; CLP-680ND,SEC	SA	1
7	3		JC82-00275A	A/S ASSY-CST-GUIDE REAR; CLP-680ND,SEC	SA	1
8	3		JC81-08478A	CSP-GEAR LIFTING; ML-6510ND,POM,M90-44	SA	1
9	3		JC81-09487A	CSP-STOPPER-KNOCK; CLP-680ND,POM M90-44	SNA	1
10	3	K3724	JC69-00494A	PAD-MP(PLUS); EPU,SCX-5315F,0.9T,W31*L11.	SA	1