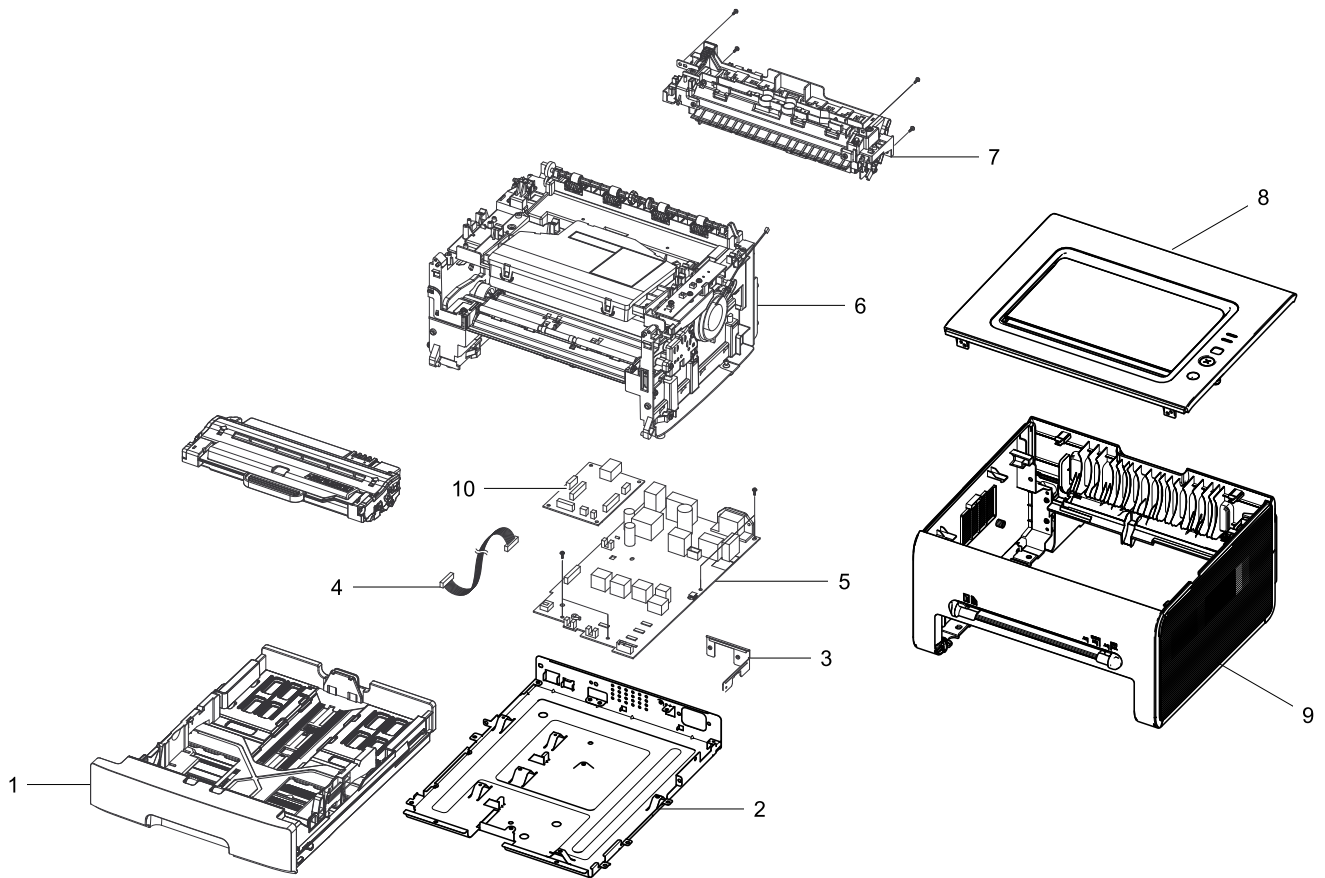


# 1. MAIN

## Exploded View

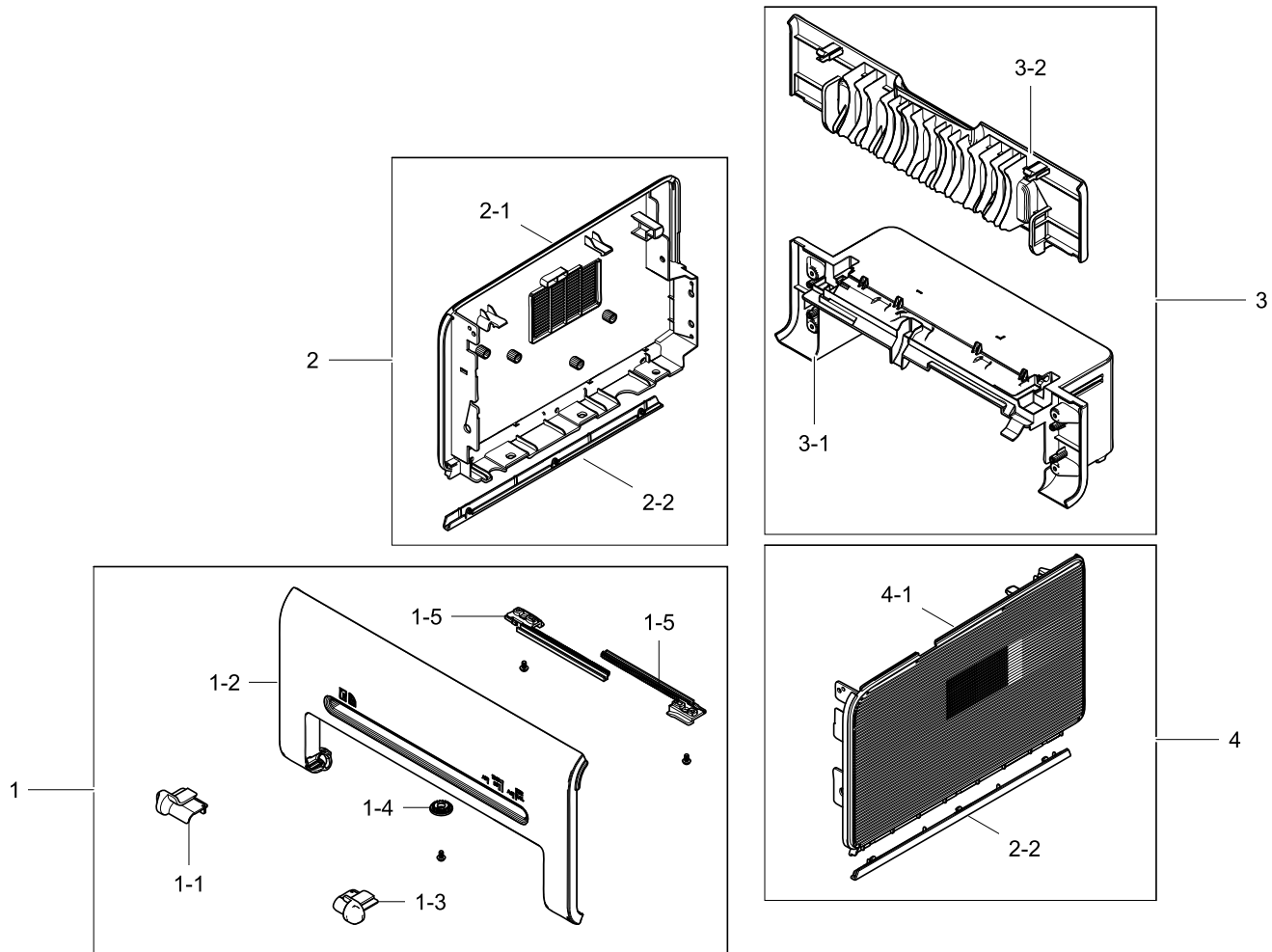


## Parts List

No.	Parent	Lvl.	Loc.	Material Code	Description & Specification	SNA	Qty.
1	ML-2540/ETS	1		JC90-01116B	CASSETTE; ML-2540,SEC	SA	1
2	JC98-01869A	2		JC63-03174A	SHIELD-ENGINE; ML-2540,SECC,0.6t,361,315.	SNA	1
3	JC98-01869A	2	B4027	JC61-00601A	BRACKET-P-INLET; ML-1400,SECC,1.00,124.8,	SNA	1
4	JC98-01869A	2	L8637	JC39-01237A	HARNESS-ENGINE; SCX-4623FN,UL 10272,300mm	SNA	1
5	ML-2540/ETS	1	L8438	JC44-00179A	SMPS/HVPS-V2; ML-2580N,SANDPIPER-H V2,FLY	SA	1
6	ML-2540/ETS	1		JC93-00422A	FRAME MAIN; ML-2540,SEC,world wide,BLACK	SNA	1
7	ML-2540/ETS	1	L8532	JC91-00945A	FUSER; ML-2580N,SEC,220V,H/R:Top coating	SA	1
8	ML-2540/ETS	1		JC95-01478H	COVER-TOP; ML-2540,SEC	SA	1
9	ML-2540/ETS	1		JC95-01479D	COVER; ML-2540,SEC	SNA	1
10	ML-2540/ETS	1		JC92-02421A	PBA-MAIN; ML-2540,SEC,Temujin,MAIN,EXP,79	SA	1

## 2. COVER

### Exploded View



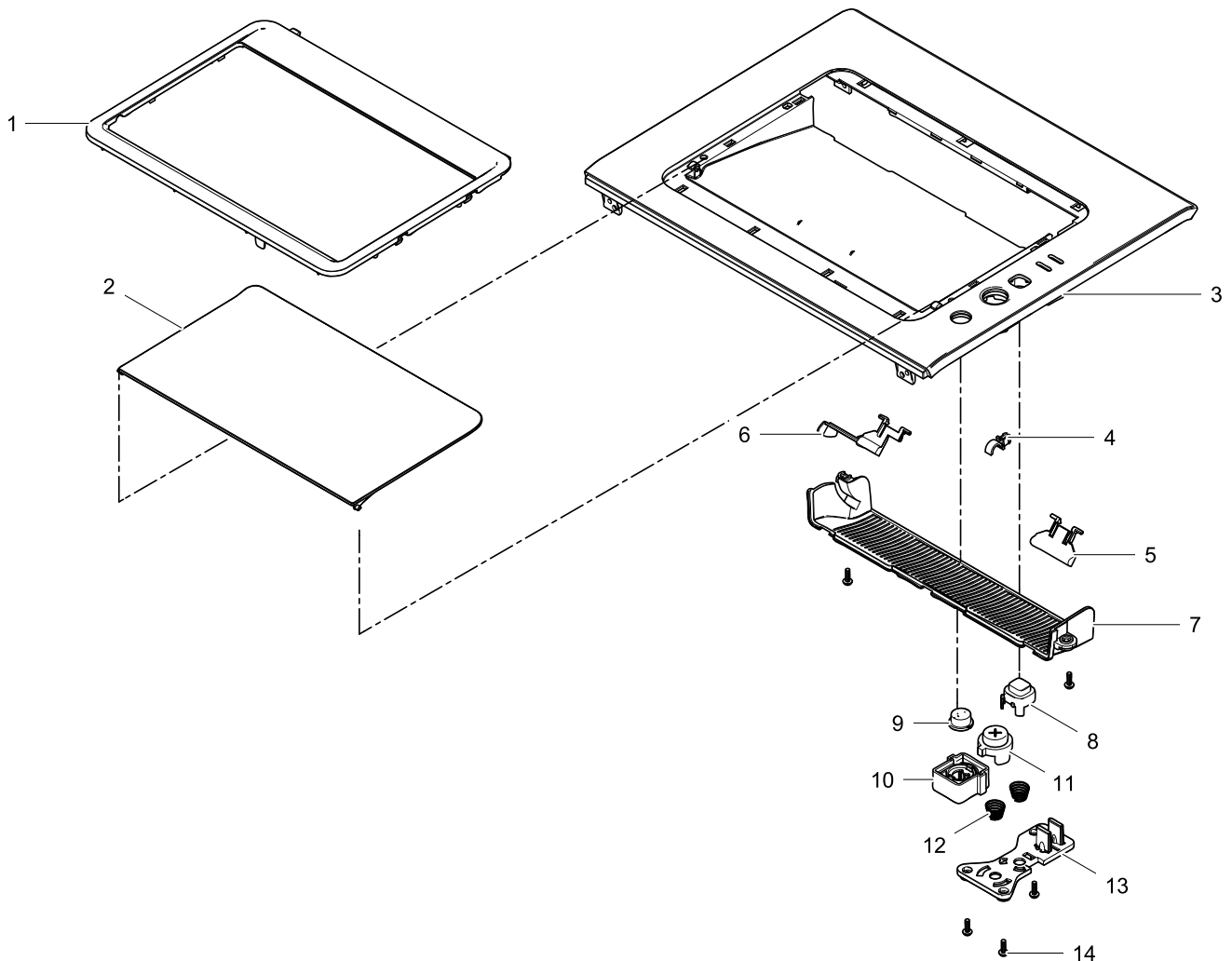
### Parts List

No.	Parent	Lvl.	Loc.	Material Code	Description & Specification	SNA	Qty.
1	JC95-01479A	2		JC95-01480A	COVER-FRONT; ML-2540,SEC	SA	1
1-1	JC95-01480A	3	Z6260	JC70-00476F	ADJUST-MANUAL L; SCX-4300,HIPS,2.5,37,35.	SA	1
1-2	JC95-01480A	3		JC63-03166A	COVER-FRONT; ML-2540,HIPS,2.0t,347,133,BL	SA	1
1-3	JC95-01480A	3	Z6261	JC70-00477F	ADJUST-MANUAL R; SCX-4300,HIPS,2.5,37,35.	SA	1
1-4	JC95-01480A	3	C3718	JC66-00387A	GEAR-RACK_PINION; ML-1710,POM,0.7,WHT	SNA	1
1-5	JC95-01480A	3	A0224	JC70-00304A	ADJUST RACK-M-MANUAL; ML-1710,POM(F20-03)	SNA	2
2	JC95-01479A	2		JC95-01482A	COVER-LEFT; ML-2540,SEC	SA	1
2-1	JC95-01482A	3		JC63-03169A	COVER-LEFT; ML-2540,SEC	SA	1

No.	Parent	Lvl.	Loc.	Material Code	Description & Specification	SNA	Qty.
2-2	JC95-01483A	3		JC63-03173A	COVER-SIDE DECO; ML-2540,HIPS,2.0t,5.6,28	SA	1
3	JC95-01479A	2		JC95-01481A	COVER-REAR; ML-2540,SEC	SA	1
3-1	JC95-01481A	3		JC63-03168A	COVER-REAR DOWN; ML-2540,ABS,2.0t,347,175	SA	1
3-2	JC95-01481A	3		JC63-03167A	COVER-REAR; ML-2540,HIPS,2.5t,270,100,BLA	SA	1
4	JC95-01479A	2		JC95-01483A	COVER-RIGHT; ML-2540,SEC	SA	1
4-1	JC95-01483A	3		JC63-03170A	COVER-RIGHT; ML-2540,SEC	SA	1

### 3. COVER-TOP

#### Exploded View



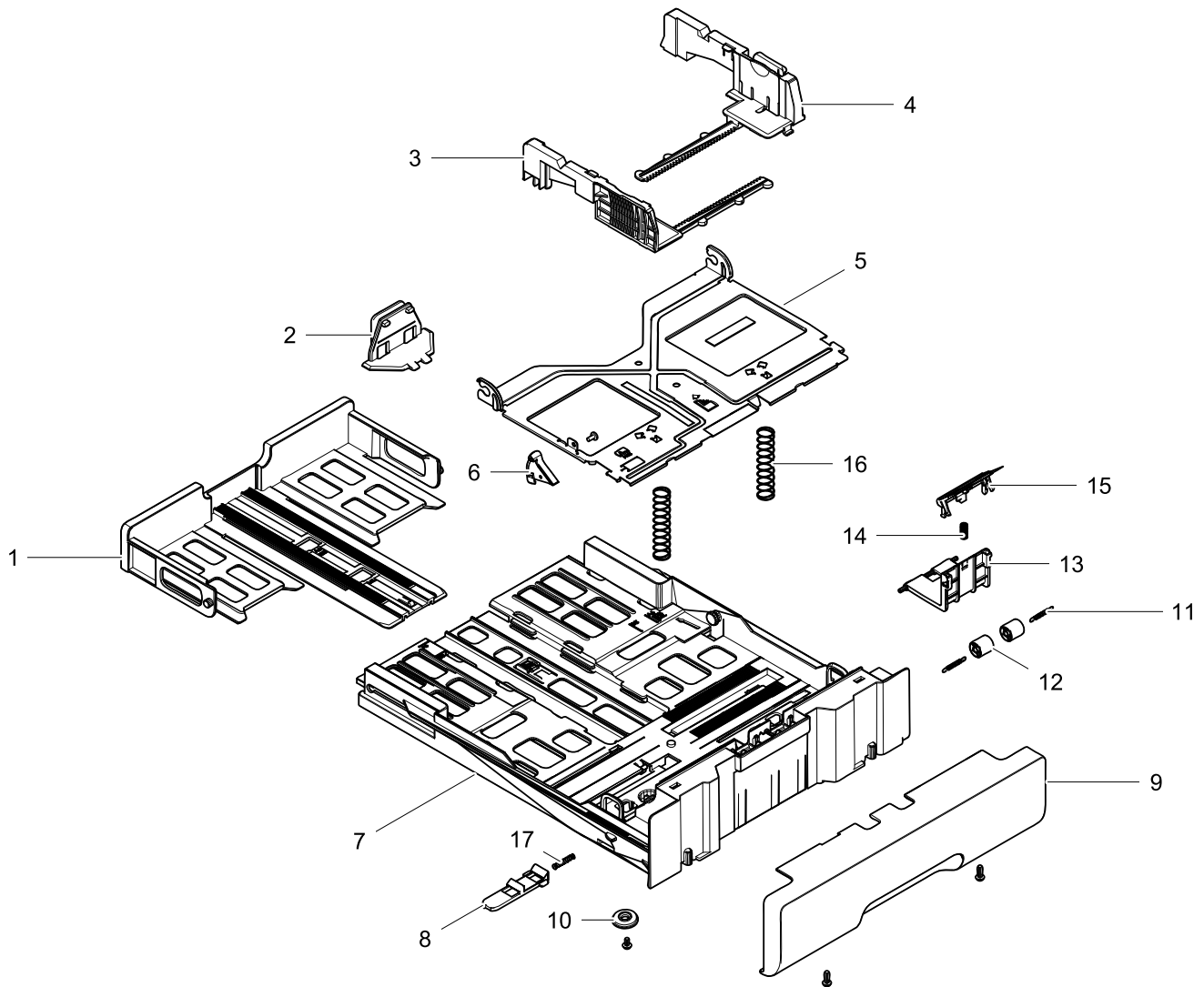
#### Parts List

No.	Parent	Lvl.	Loc.	Material Code	Description & Specification	SNA	Qty.
1	JC95-01478A	2		JC63-03172A	COVER-TOP DECO; ML-2540,ML-2541,ABS,2.0t,	SA	1
2	JC95-01478A	2		JC63-03165A	COVER-STACKER; ML-2540,HIPS,2.0t,222,154,	SA	1
3	JC95-01478A	2		JC63-03164A	COVER-TOP; ML-2540,HIPS,2.5t,347,312,BLAC	SA	1
4	JC95-01478A	2	K8333	JC72-00387A	PMO-BUSHING_F/DOWN; ML-6060A,POM,BLK	SA	1
5	JC95-01478A	2	F5252	JC72-01343A	PMO-SUB_M_STACKER; ML-1520,PC,39*25.5*3.5	SNA	1
6	JC95-01478A	2	L8447	JC61-03446A	STACKER-BIN_FULL; ML-2580N,PC,black,PART	SA	1

No.	Parent	Lvl.	Loc.	Material Code	Description & Specification	SNA	Qty.
7	JC95-01478A	2	L8575	JC63-02390B	COVER-EXIT; ML-2525,PC+ABS,2.3,257,SEC,BL	SA	1
8	JC95-01478A	2		JC64-00500C	KEY-PRINT SCREEN; ML-2540,ABS,BLACK(K2144	SA	1
9	JC95-01478A	2	L8579	JC64-00502B	KEY-POWER; ML-2580N,ABS,HB,W0014+BLACK	SA	1
10	JC95-01478A	2	L8492	JC64-00504A	KEY-POWER HOLDER; ML-2580N,ABS,BLACK	SA	1
11	JC95-01478A	2		JC64-00669A	KEY-STOP; ML-2540,ABS,27.3,19.6,Red Orang	SA	1
12	JC95-01478A	2	G1513	6107-001169	SPRING-CS; SUS304-WPB,PI0.55,D9.3,14.25,I	SA	2
13	JC95-01478A	2	L8512	JC67-00413A	LENS-LED; ML-2580N,PMMA,MILKY WHITE	SNA	1
14	JC95-01478A	2	F9909	6003-000196	SCREW-TAPTYPE; PWH,+,B,M3,L10,NI PLT,SWRC	SA	5

## 4. CASSETTE

### Exploded View



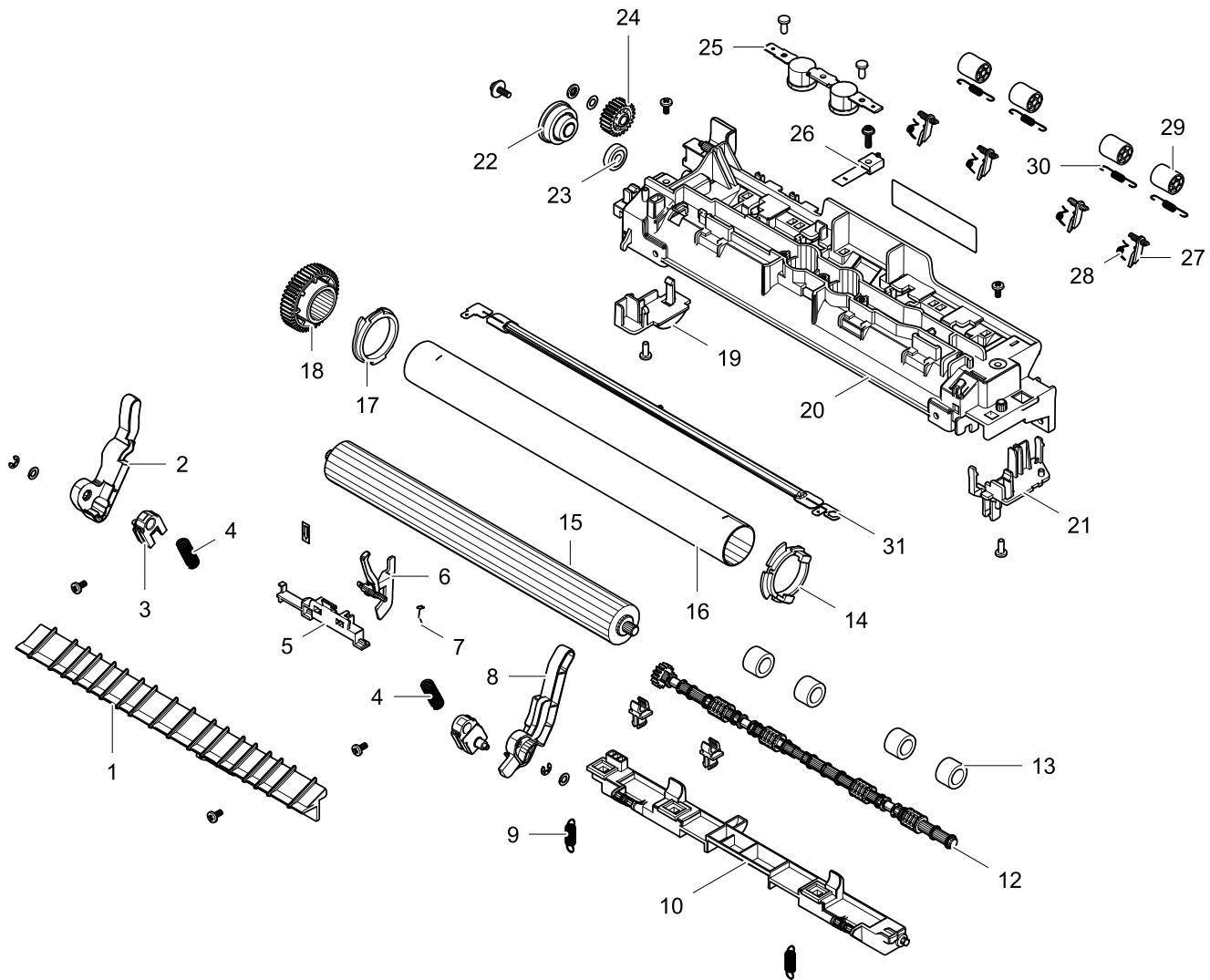
### Parts List

No.	Parent	Lvl.	Loc.	Material Code	Description & Specification	SNA	Qty.
1	JC90-01116A	2		JC61-03341A	GUIDE-EXTENSION CST; ML-2580N,ABS,BLACK,P	SNA	1
2	JC90-01116A	2	F2186	JC72-00971A	PMO-EXTENSION SMALL; ML-1710,ABS(HF-0660I	SA	1
3	JC90-01116A	2	A0274	JC70-00300A	ADJUST-M-CASSETTE_L; ML-1400,ABS,VIOLET B	SA	1
4	JC90-01116A	2	A0276	JC70-00301A	ADJUST-M-CASSETTE_R; ML-1400,ABS,VIOLET B	SC	1
5	JC90-01116A	2		JC61-04428A	PLATE-KNOCK UP; ML-2540,SECC,0.8t,249,160	SNA	1
6	JC90-01116A	2	A8107	JC66-00719A	CAM-M-KNOCK UP; ML-1750,POM(KOLON K700),N	SA	1

No.	Parent	Lvl.	Loc.	Material Code	Description & Specification	SNA	Qty.
7	JC90-01116A	2	C2833	JC61-03343A	FRAME-CASSETTE; ML-2580N,ABS,HB,BLACK	SNA	1
8	JC90-01116A	2	F4630	JC72-00972A	PMO-PLATE_LOCKER; ML-1710,POM(M90-44),WHT	SA	1
9	JC90-01116A	2		JC63-03171A	COVER-CASSETTE; ML-2540,HIPS,2.0t,347,79,	SNA	1
10	JC90-01116A	2	C3690	JG66-40003A	GEAR-PINION; SF4000,POM,1,Z16,WHT	SA	1
11	JC90-01116A	2	G1557	6107-001047	SPRING-ES; SUS304,PI0.45,D2.75,L24.2	SA	2
12	JC90-01116A	2	Z6320	JC66-00529C	ROLLER-IDLE FEED; SCX-4300,POM,13.5,13,BL	SA	2
13	JC90-01116A	2	I7294	JC61-01978A	HOUSING-HOLDER PAD; ML-3471ND,ABS,2.0,45.	SA	1
14	JC90-01116A	2	G1312	JC61-70911A	SPRING ETC-EXIT ROLL FD; ML-165,SUS304 WP	SA	1
15	JC90-01116A	2	L8531	JC90-00941A	CASSETTE-HOLDER PAD; ML-2580N,SEC,Worldwi	SA	1
16	JC90-01116A	2	G1517	6107-001166	SPRING-CS; SUS304-WPB,PI0.65,D12.65,L59.3	SA	2
17	JC90-01116A	2	G1358	JG61-70531A	SPRING ETC-LOCKER,PLATE; SF6000,SUS304WPB	SA	1

## 5. FUSER

### Exploded View



### Parts List

No.	Parent	Lvl.	Loc.	Material Code	Description & Specification	SNA	Qty.
1	JC91-00945A	2	L8451	JC61-03450A	GUIDE-INPUT; ML-2580N,PET+GF30%,220,BLACK	SA	1
2	JC91-00945A	2	L8502	JC66-02365A	LEVER-LINK JAM L; ML-2580N,PC,ICE GREEN	SA	1
3	JC91-00945A	2	L8459	JC61-03473A	BUSH-PR HIGH; ML-2580N,PPS RBA514N,ID 4.8	SNA	2
4	JC91-00945A	2	L7239	JC61-00056A	SPRING ETC-PR(7300); ML-7300,PIANO WIRE,1	SA	2
5	JC91-00945A	2	C4973	JC61-00581A	HOLDER-ACTUATOR; ML-1710,PBT GP2150+GF 15	SA	1
6	JC91-00945A	2	L8501	JC66-02364A	ACTUATOR-EXIT; ML-2580N,PC+GF20%,Black	SA	1



No.	Parent	Lvl.	Loc.	Material Code	Description & Specification	SNA	Qty.
7	JC91-00945A	2	G1592	6107-001165	SPRING-TS; SUS304-WPB,PI0.2,D4,ID3.8,OD4.	SA	1
8	JC91-00945A	2	L8503	JC66-02366A	LEVER-LINK JAM R; ML-2580N,PC,ICE GREEN	SA	1
9	JC91-00945A	2	L8428	6107-001802	SPRING-ES; SUS304,PI0.4,L17.1,ID3.9,OD4.7	SA	2
10	JC91-00945A	2	L8485	JC63-02413A	COVER-FUSER DUMMY; ML-2580N,PET+GF30,2.3,	SNA	1
12	JC91-00945A	2	F8916	JC66-00380A	ROLLER-M-EXIT F/UP; ML-1710,PC(GE EXL-911	SA	1
13	JC91-00945A	2	F8720	JC73-00017A	RMO-RUBBER_EXIT; SF-5100,EPDM,14.4*9.8,50	SA	4
14	JC91-00945A	2	H1233	JC61-00887A	BUSH-M-HR R_R2; SCX-4920N,PPS, 25.3,29	SA	1
15	JC91-00945A	2	F8964	JC66-00600A	ROLLER-PRESSURE; ML-1710,SUM24L+LSR+PFA,2	SA	1
16	JC91-00945A	2	L4436	JC66-01256A	ROLLER-HEAT; ML-2571N,AL 5052+ PFA COAT,2	SA	1
17	JC91-00945A	2	H1232	JC61-00888A	BUSH-M-HR L_R2; SCX-4920N,PPS, 25.3,29	SA	1
18	JC91-00945A	2	I5468	JC66-01254A	GEAR-FUSER; ML-2571N,PPS,0.8,45,37.6*14.5	SA	1
19	JC91-00945A	2	L8514	JC67-00415A	CAP-FUSER LAMP L; ML-2580N,PET+GF30%,T 2,	SA	1
20	JC91-00945A	2	L8484	JC63-02412A	COVER-FUSER; ML-2580N,PET+GF30,294.1,BLAC	SNA	1
21	JC91-00945A	2	L8513	JC67-00414A	CAP-FUSER LAMP R; ML-2580N,PET+GF30%,T 2,	SA	1
22	JC91-00945A	2	L8500	JC66-02317A	GEAR-RDCN_EXIT; ML-2580N,POM,0.8 / 0.8,25	SA	1
23	JC93-00422A	2	F2531	JC72-00143A	PMO-GEAR_EXIT_DRV16; SF-5100,POM(DE8903),	SA	2
24	JC93-00422A	2	C3437	JC66-00396A	GEAR-IDLE 23; ML-1710,POM,0.8,23,BLK,HB	SA	1
25	JC91-00945A	2	M0316	4712-001084	THERMOSTAT; 125/250VAC,200,195+-5C,200,10	SNA	1
26	JC91-00945A	2	L7831	1404-001447	THERMISTOR-NTC ASSY; 7Kohm,3370K,0.3mW/C,	SNA	1
27	JC91-00945A	2	L8467	JC61-03685A	GUIDE-CLAW; ML-2580N,PTFE,13.20,16.57,WHT	SA	4
28	JC91-00945A	2	L7022	JC61-01950A	SPRING ETC-CLAW; ML-3471ND/SEE,SUS304WPB,	SA	4
29	JC91-00945A	2	F4747	JC72-40361A	PMO-ROLLER_EXIT; SCF(XR),POM,NATURAL,M90-	SA	4

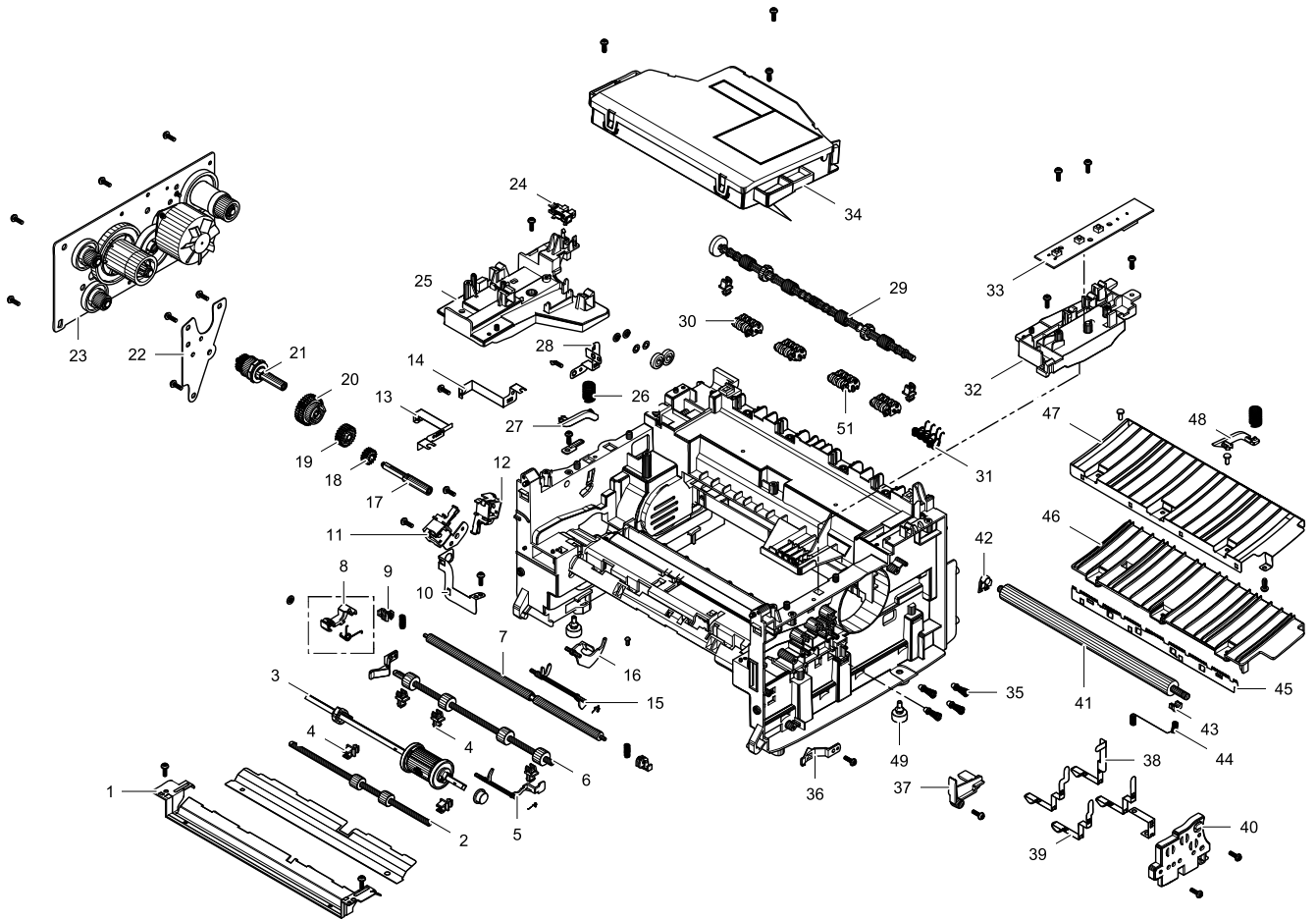
Exploded Views and Parts List

---

No.	Parent	Lvl.	Loc.	Material Code	Description & Specification	SNA	Qty.
30	JC91-00945A	2	G1330	JC61-70976A	SPRING ETC-FUSER EXIT; ML-7000,SUS304-WPB	SA	4
31	JC91-00945A	2	J3385	4713-001212	LAMP-HALOGEN; 230V,750W,8x284mm	SA	1

## 6. FRAME\_MAIN

### Exploded View



### Parts List

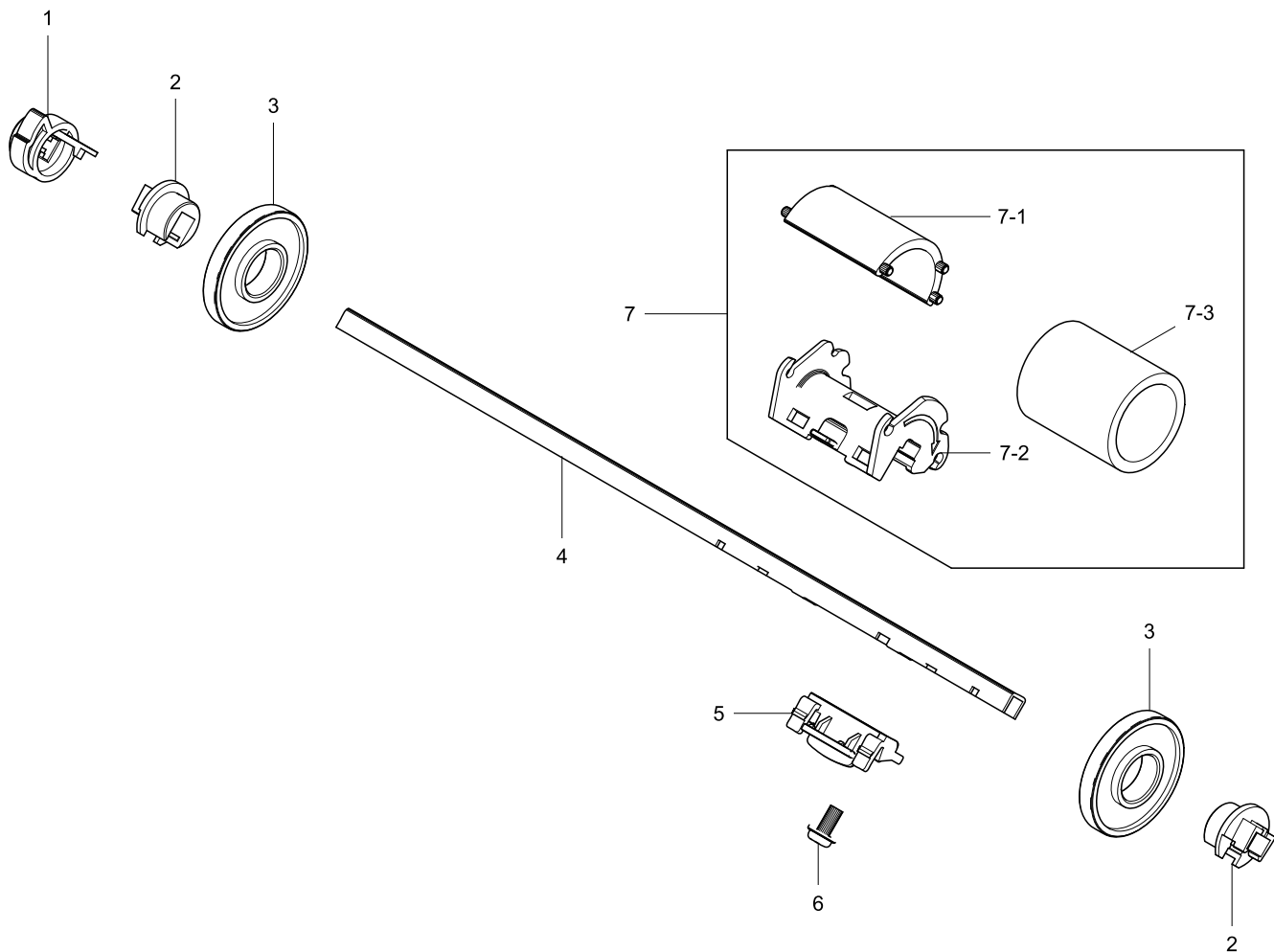
No.	Parent	Lvl.	Loc.	Material Code	Description & Specification	SNA	Qty.
1	JC93-00422A	2	C4386	JC61-00718A	GUIDE-P-PAPER; ML-1710,SECC,0.8,19.5,261.	SA	1
2	JC93-00422A	2	L8497	JC66-00598B	ROLLER-FEED; ML-2580N,SUM22+NI+EPDM,5,11.	SA	1
3	JC93-00422A	2	L8537	JC93-00085A	FRAME BASE-PICK UP; ML-2580N,SEC,Worldwid	SA	1
4	JC93-00422A	2	F0119	JC72-00382B	BUSH; ML-1710,POM(DERLIN 8903),WHITE	SNA	7
5	JC93-00422A	2	L8544	JC93-00109A	FRAME-LOWER ACTUATOR MANUAL; ML-2580N,SEC	SA	1
6	JC93-00422A	2	L8496	JC66-00526B	ROLLER-REGI; ML-2580N,EPDM+SUM22,14mm,GRA	SA	1
7	JC93-00422A	2		JC66-02756A	SHAFT-FEED_LIDE; ML-2580MN,SUM22,223,8	SA	1
8	JC93-00422A	2	L8540	JC93-00106A	FRAME-LEFT STOPPER PICK UP; ML-2580N,SEC,	SA	1

No.	Parent	Lvl.	Loc.	Material Code	Description & Specification	SNA	Qty.
9	JC93-00422A	2	A7646	JC61-00585A	BUSH-M-FEED IDLE; ML-1710,POM AT-15CF,3	SA	2
10	JC93-00422A	2	D1107	JC70-00458A	IPR-P-GROUND_GUIDE PAPER; ML-1710,C5210P,	SNA	1
11	JC93-00422A	2	L6828	JC33-00025B	SOLENOID-MANUAL; SCX-5135ND,DC 24V,120ohm	SA	1
12	JC93-00422A	2	L6838	JC33-00026A	SOLENOID-PICK UP; ML-2851ND,DC24V,120 ohm	SA	1
13	JC93-00422A	2	D1102	JC70-00308A	IPR-P-GROUND_DRIVE; ML-1710,SUS304-CSP,0.	SNA	1
14	JC93-00422A	2	D1085	JC70-00335A	IPR_P_GROUND_DRIVE2; ML-1710,SUS304-CSP,0	SNA	1
15	JC93-00422A	2	L8545	JC93-00110A	FRAME-LOWER ACTUATOR FEED; ML-2580N,SEC,W	SA	1
16	JC93-00422A	2	E9727	JC72-00975A	PMO-ACTUATOR EMPTY; ML-1710,PC(NH-1023P),	SA	1
17	JC93-00422A	2	G0228	JC66-00398A	SHAFT-FEED; ML-1710,POM(M90-44),NTR	SA	1
18	JC93-00422A	2	C3358	JC66-00394A	GEAR-FEED 2; ML-1710,POM,0.8,NTR,HB	SA	1
19	JC93-00422A	2	C3437	JC66-00396A	GEAR-IDLE 23; ML-1710,POM,0.8,23,BLK,HB	SA	1
20	JC93-00422A	2	J8541	JC97-03141A	MEA UNIT-GEAR_PICKUP; ML-2851ND,SEC,-,-,-	SA	1
21	JC93-00422A	2	D8849	JC97-01788A	MEA UNIT-CLUTCH; ML-1710,SAMSUNG	SA	1
22	JC93-00422A	2	A7406	JC61-00602A	BRACKET-P-FEED; ML-1710,SECC,1.00	SNA	1
23	JC93-00422A	2	L8596	JC93-00003A	DRIVE MAIN-BRACKET; ML-2580N,SEC,WORLD,-,	SA	1
24	JC93-00422A	2	E9322	0604-001393	PHOTO-INTERRUPTER; TR,75mW,BGA,TR	SA	1
25	JC93-00422A	2	L8448	JC61-03447A	FRAME-HOLDER_LSU_L; ML-2580N,PC G/F,3025P	SA	1
26	JC93-00422A	2	G1337	JC61-70932A	SPRING ETC-GUIDE DEVE; ML-5000A,D4.3,L16.	SA	2
27	JC93-00422A	2	F4593	JC72-00984A	PMO-PLATE GUIDE DEVE_L; ML-1710,POM(M90-4	SA	1
28	JC93-00422A	2	L8483	JC63-02411A	GROUND-FUSER; ML-2580N,C5210P,0.2T	SNA	1
29	JC93-00422A	2	L8599	JC93-00097A	FRAME-ROLLER EXIT FACE DOWN; ML-2580N,SEC	SA	1
30	JC93-00422A	2	L8541	JC93-00107A	FRAME-ROLLER DECURL; ML-2580N,SEC,WORLDWI	SA	2
31	JC93-00422A	2	L7811	JC65-00019A	TERMINAL-CRUM; SCX-5530FN,SUS304WPB,PI 0.	SA	4

No.	Parent	Lvl.	Loc.	Material Code	Description & Specification	SNA	Qty.
32	JC93-00422A	2	L8449	JC61-03448A	FRAME-HOLDER_LSU_R; ML-2580N,PC G/F,3025P	SA	1
33	JC93-00422A	2		JC92-02414A	PBA-OPE; ML-2540N,SEC,OPE,130mmX25mm	SA	1
34	JC93-00422A	2	L8566	JC97-03585A	LSU; ML-1910,SEC,Single,A4(Ltr),600,M1,78	SA	1
35	JC93-00422A	2	E1059	JC75-00049A	MEC-TERMINAL; SF-5100,SAMSUNG	SA	4
36	JC93-00422A	2	F4182	JC72-00983A	PMO-LOCKER CST; ML-1710,POM(DELIN 900P),W	SA	2
37	JC93-00422A	2	E9718	JC72-00974A	PMO-ACTUATOR CVR OPEN; ML-1710,PC V0(NH10	SA	1
38	JC93-00422A	2	L8495	JC65-00043A	TERMINAL-CR; ML-2580N,SUS301 3/4H,46,Heat	SA	1
39	JC93-00422A	2	L8493	JC65-00041A	TERMINAL-SUPPLY; ML-2580N,SUS301 3/4H,52.	SA	1
40	JC93-00422A	2	L8458	JC61-03467A	HOUSING-TERMINAL; ML-2580N,PC+ABS,BLACK,V	SA	1
41	JC93-00422A	2	F9016	JC66-01218A	ROLLER-TRANSFER; SCX-4200,NBR+ECO,15,218m	SA	1
42	JC93-00422A	2	A7665	JC61-00588A	BUSH-M-TR L; ML-1710,POM,6.1, 8,BLK	SA	1
43	JC93-00422A	2	A7675	JC61-02468A	BUSH-TR_L; ML-2851ND,STEEL SINTERED	SA	1
44	JC93-00422A	2	G1581	6107-001162	SPRING-ETC; SUS304-WPB,PI0.45,D4.45,L12,I	SA	1
45	JC93-00422A	2	E9623	JC61-00604A	PLATE-P-SAW; ML-1400,SUS304-CSP,0.15,15.1	SNA	1
46	JC93-00422A	2	C4327	JC61-00594A	GUIDE-M-TR RIB; ML-1710,PC+ABS,BLK,30.6*7	SA	1
47	JC93-00422A	2	C4392	JC61-00607A	GUIDE-P-TR; ML-1710,SECC,0.5,239.1,76.4	SA	1
48	JC93-00422A	2	F4594	JC72-00985A	PMO-PLATE GUIDE DEVE_R; ML-1710,POM(M90-4	SA	1
49	JC93-00422A	2	I4848	JC61-40001A	FOOT-ML80; ML-80,NBR,GRAY	SNA	2
51	JC93-00422A	2	L8542	JC93-00107B	FRAME-ROLLER DECURL; ML-2580N,SEC,WORLDWI	SA	2

## 6.1. BASE FRAME-PICK UP

### Exploded View



### Parts List

No.	Parent	Lvl.	Loc.	Material Code	Description & Specification	SNA	Qty.
1	JC93-00085A	3	A7656	JC61-00586A	BUSH-M-PICK_UP L; ML-1710,POM (DELIN 8903	SNA	1
2	JC93-00085A	3	L8460	JC61-03477A	STOPPER-PICK_UP; ML-2580N,POM,BLACK	SA	2
3	JC93-00085A	3	F3365	JC72-00982A	PMO-IDLE PICK_UP; ML-1710,POM(M90-44),HB,	SA	2
4	JC93-00085A	3	G0339	JC66-00399A	SHAFT-P-PICK_UP; ML-1710,SECC,0.8T	SA	1
5	JC93-00085A	3	L8461	JC61-03485A	HOLDER-PICKUP; ML-2580N,PC,BLACK	SA	1
6	JC93-00085A	2	F9907	6003-000264	SCREW-TAPTYPE; PWH,+,-,B,M3,L6,ZPC(WHT),S	SNA	1
7	JC93-00085A	3	L8538	JC93-00087A	FRAME BASE-PICK UP RUBBER; ML-2580N,SEC,W	SA	1

No.	Parent	Lvl.	Loc.	Material Code	Description & Specification	SNA	Qty.
7-1	JC93-00087A	4	L8463	JC61-03514A	HOUSING-PICKUP_RUB; SCX-4623FN,PC+ABS,BLA	SA	1
7-2	JC93-00087A	4	L8444	JC61-03435A	HOUSING-PICKUP; ML-2580N,PC+ABS,AMBER GOL	SA	1
7-3	JC93-00087A	4	L8529	JC73-00315A	RUBBER-PICK_UP; SCX-4623FN,EPDM,27.7,23.5	SA	1