

## 5. Exploded Views and Parts List

# Contents

5.1 Main Exploded View . . . . .	5-2
5.2 Base Exploded View . . . . .	5-4
5.3 Engine Exploded View . . . . .	5-6
5.4 Bracket LF Exploded View . . . . .	5-8
5.5 OPE (SF-370/371 Type) Exploded View . . . . .	5-10
5.6 OPE (SF-375TP Type) Exploded View . . . . .	5-12

### FACSIMILE



### The keynote of Product

#### New Design Economic Inkjet MFP [ Series Model ]

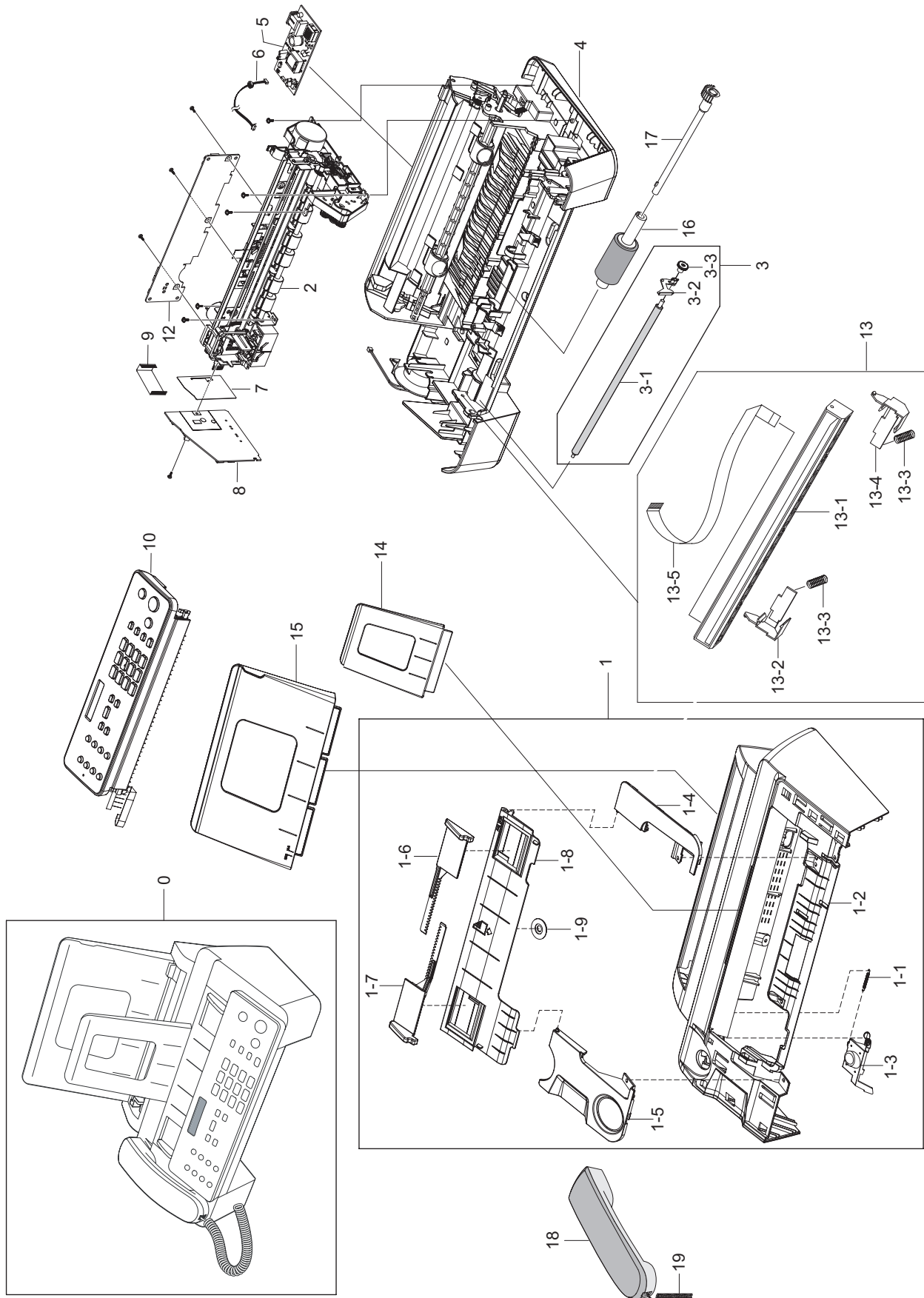
**SF-370** : Standalone FAX

**SF-371P** : Standalone FAX + Printer  
(One Pen Mono Printer)

**SF-375TP** : Standalone FAX + Printer  
+ TAM (Digital Answering Machine)

- Modem Speed : 14.4Kbps
- TX Speed : 6sec
- Processor : 66MHz CHORUS2 CPU
- Speed : 4 ppm based on 300x300 dpi

## 5.1 Main Exploded View



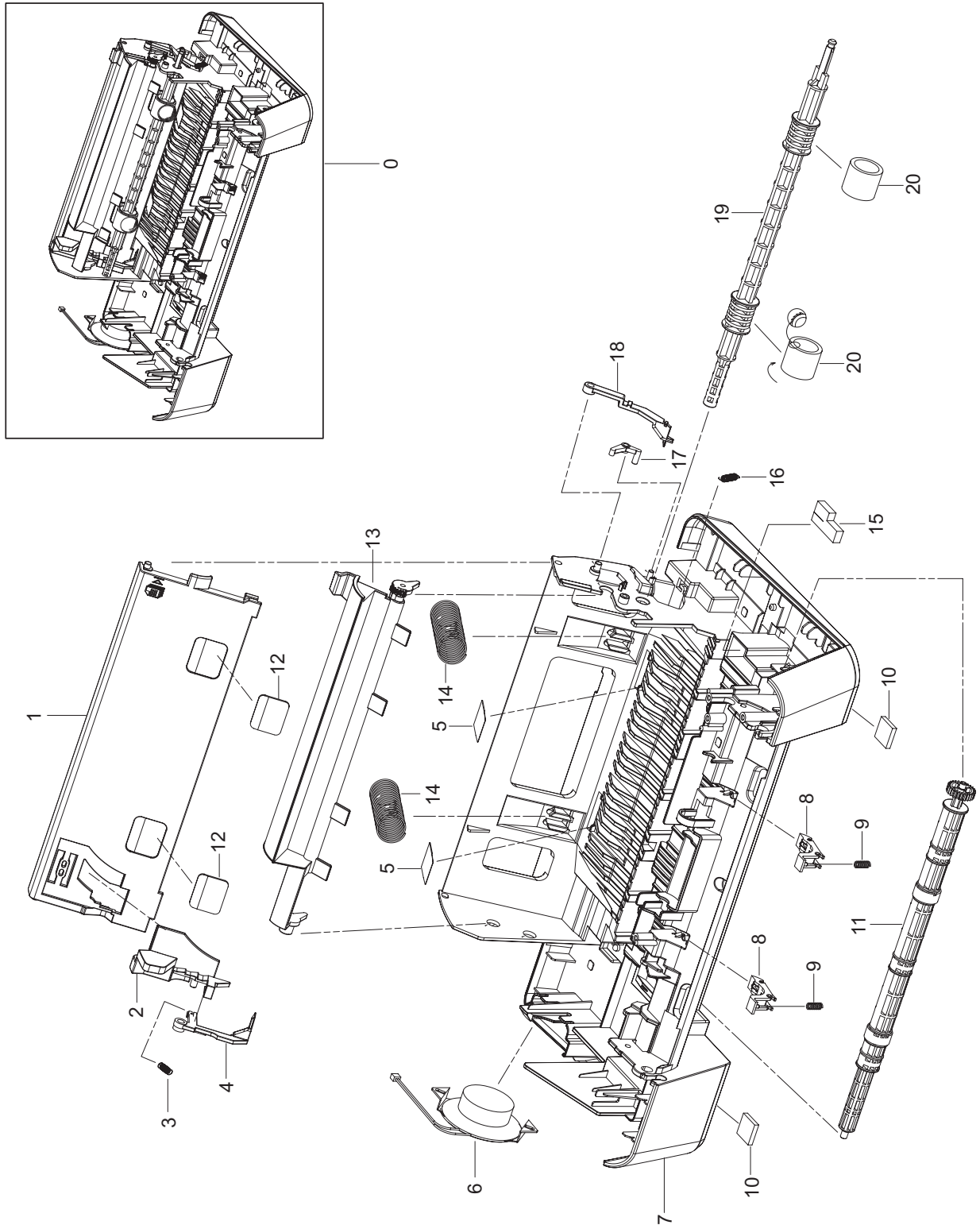
## Main Parts List

SA : Service Available

SA : Service available SNA : Service not available

Drawer#	SEC_CODE	DESCRIPTION	Q'ty	Service
5.1-0	SET	A4 INK MFP		
5.1-1	JB97-02100A	MEA HOU-COVER TOP (SF-370)	1	SA
5.1-1	JB97-02100B	MEA HOU-COVER TOP (SF-371P/SF-375TP)	1	SA
5.1-1-1	JB61-70908A	SPRING ETC-LEVER	1	SA
5.1-1-2	JB63-00460A	COVER-TOP	1	SNA
5.1-1-3	JB64-00118A	BUTTON-HOOK SWITCH	1	SNA
5.1-1-4	JB63-00458A	COVER-BEZEL RIGHT	1	SNA
5.1-1-5	JB63-00457A	COVER-BEZEL LEFT	1	SNA
5.1-1-6	JB61-00356G	GUIDE-DOC R	1	SNA
5.1-1-7	JB61-00357G	GUIDE-DOC L	1	SNA
5.1-1-8	JB63-00452A	COVER-DOOR	1	SNA
5.1-1-9	JG66-40003A	GEAR-PINION	1	SA
5.1-2	JB96-01733A	ELA UNIT-ENGINE	1	SA
5.1-3	JB97-01207A	MEA ETC-ROLLER WHITE	1	SA
5.1-3-1	JB75-00053A	MEC-ROLLER WHITE	1	SNA
5.1-3-2	JB72-00137A	PMO-BUSHING WHITE	1	SA
5.1-3-3	JB66-00004A	GEAR-DRIVE	1	SNA
5.1-4	JB96-01732A	ELA HOU-BASE	1	SA
5.1-5	JB44-00057A	SMPS-V2C	1	SA
5.1-6	JB39-00177A	CBF HARNESS-SMPS-MAIN	1	SA
5.1-7	JB63-00451A	SHEET-INSULATION	1	SNA
5.1-8	JB92-01328A	PBA SUB-LIU	1	SA
5.1-9	JB39-00181A	CBA HARNESS-MAIN LIU FFC	1	SA
5.1-10	JB96-01730D	ELA UNIT SCAN (SF-370/371P)	1	SA
5.1-10	JB96-01734A	ELA UNIT SCAN(SF-375TP))	1	SA
5.1-11	JB39-00179A	CBF HARNESS-CR MOTOT-MAIN	1	SA
5.1-12	JB92-01327A	PBA MAIN(SF-370)	1	SA
5.1-12	JB92-01327B	PBA MAIN(SF-375TP)	1	SA
5.1-12	JB92-01327F	PBA MAIN(SF-371P)	1	SA
5.1-13	JB96-01643A	ELA UNIT-CIS	1	SA
5.1-13-1	0609-001243	CONTACT IMAGE SENSOR	1	SA
5.1-13-2	JB61-00138A	GUIDE-M_CIS L	1	SA
5.1-13-3	JB61-70938A	SPRING ETC-CIS(ATLAS)	2	SA
5.1-13-4	JB61-00137A	GUIDE-M_CIS R	1	SA
5.1-13-5	JB39-00258A	FLAT CABLE	1	SNA
5.1-14	JB97-02103A	MEA HOU-TRAY DOC	1	SA
5.1-15	JB97-02102A	MEA HOU-TRAY ASF	1	SA
5.1-16	JB97-01620A	MEA UNIT-ROLLER ADF	1	SA
5.1-17	JB61-00136A	SLEEVE-M_ROLLER ADF	1	SNA
5.1-18	JB96-01729A	ELA UNIT-HANDSET	1	SA
5.1-19	JB39-00182G	CURL CORD	1	SA

## 5.2 Base Exploded View



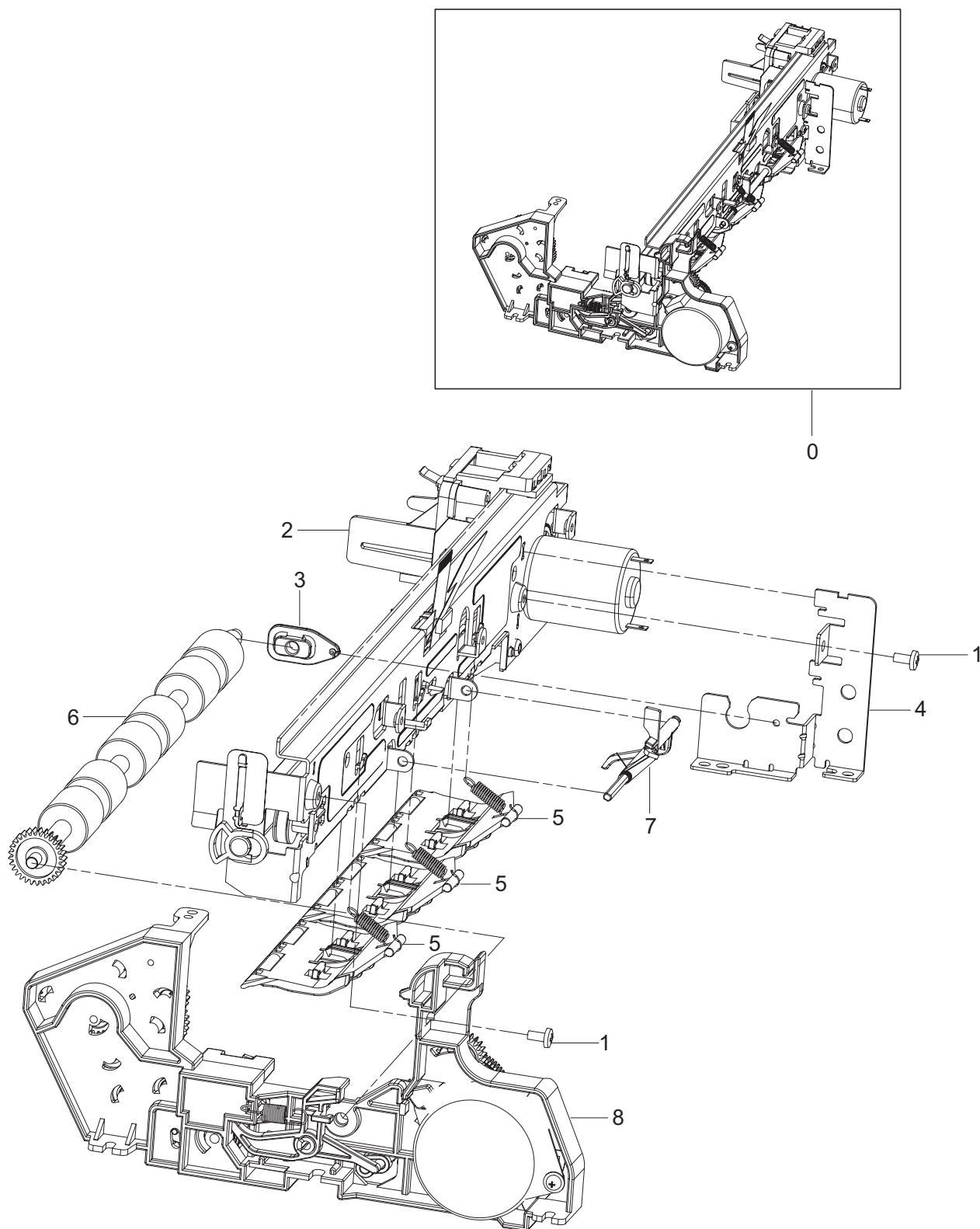
## Base Parts List

SA : Service Available

SA : Service available SNA : Service not available

Drawer#	SEC_CODE	DESCRIPTION	Q'ty	Service
5.2-0	JB96-01732A	ELA HOU-BASE	1	SA
5.2-1	JB61-00482A	PLATE-PRESSURE ASF	1	SNA
5.2-2	JB61-00486A	GUIDE-SIDE PAPER	1	SNA
5.2-3	6107-001147	SPRING-ES	1	SA
5.2-4	JB66-00191A	LEVER-M_FINGER LH ASF	1	SNA
5.2-5	JB63-00058A	SHEET-FILM ASF	2	SNA
5.2-6	3001-002262	SPEAKER	1	SA
5.2-7	JB63-00459A	COVER-BASE	1	SNA
5.2-8	JB97-01628A	MEA UNIT-LEVER EXIT	2	SA
5.2-9	JB61-70907A	SPRING ETC-CS (EXIT)	2	SA
5.2-10	JG61-40001A	FOOT-SF4000	2	SA
5.2-11	JB97-02101A	MEA UNIT-ROLLER EXIT	1	SA
5.2-12	JF74-10234A	MPR-PAD	2	SA
5.2-13	JB63-00453A	COVER-DUST	1	SNA
5.2-14	6107-001136	SPRING-CS	2	SA
5.2-15	JB63-00053A	FELT-INK	1	SA
5.2-16	6107-000011	SPRING-ES	1	SA
5.2-17	JB66-00175A	LEVER-M_FINGER ASSI ASF	1	SNA
5.2-18	JB66-00174A	LEVER-M_FINGER ASF	1	SNA
5.2-19	JB66-00176A	SHAFT-M_PICK UP	1	SA
5.2-20	JB73-00009A	RMO-PICK UP RUBBER	2	SA

## 5.3 Engine Exploded View



## Engine Parts List

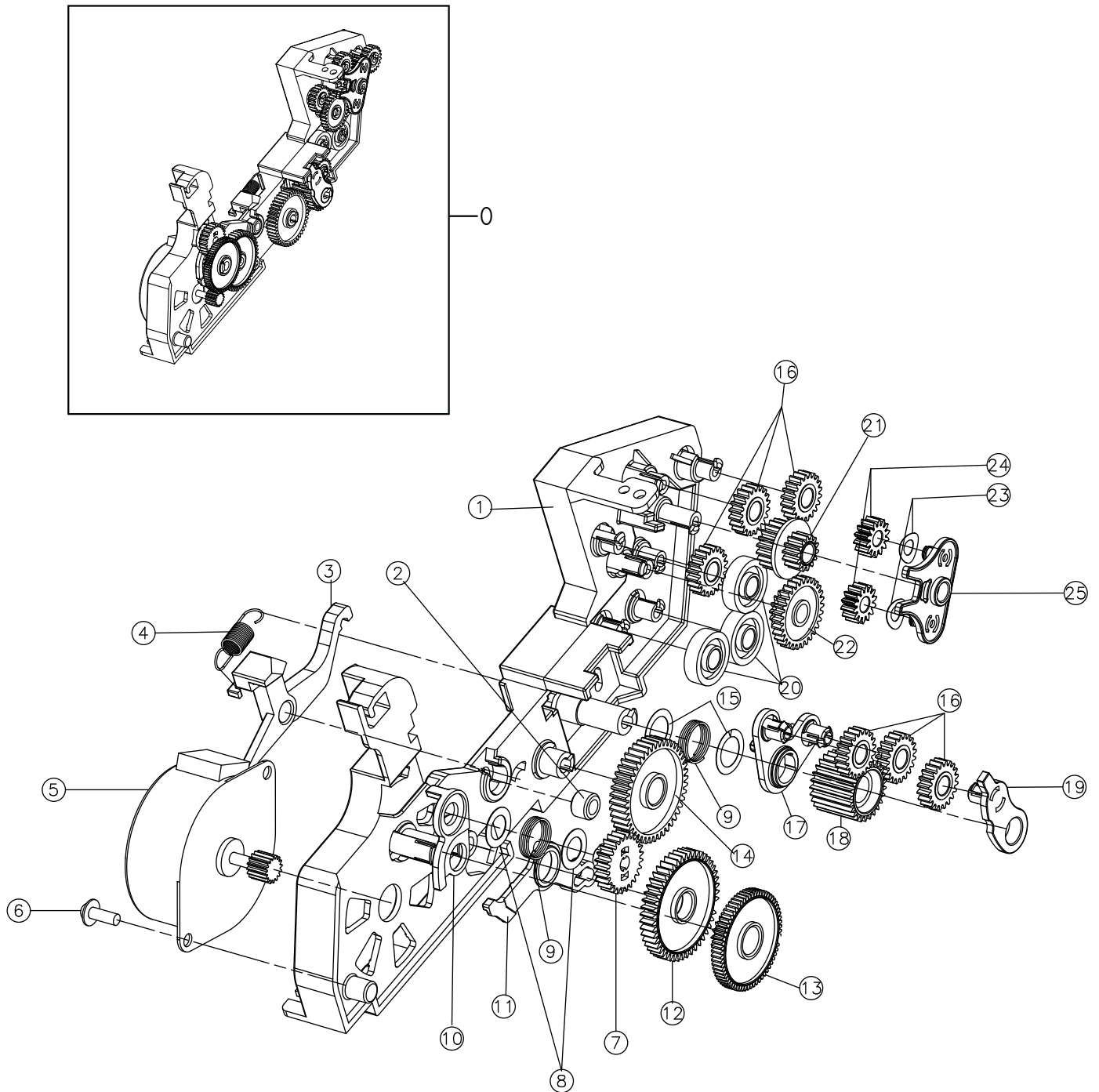
SA : Service Available

SA : Service available SNA : Service not available

Drawer#	SEC_CODE	DESCRIPTION	Q'ty	Service
5.3-0	JB96-01733A	ELA UNIT-ENGINE	1	SA
5.3-1	6003-000269	SCREW-TAPTITE	2	SA
5.3-2	JB96-01638A	ELA UNIT-ENGINE HP	1	SA
5.3-3	JB61-00151A	BUSH-M_FEED ROLLER	1	SA
5.3-4	JB61-00483A	BRACKET-LEFT	1	SNA
5.3-5	JB97-01630A	MEA UNIT-FRICTION ROLLER	3	SA
5.3-6	JB97-02104A	MEA UNIT-FEED ROLLER	1	SA
5.3-7	JB97-01672A	MEA ETC-LEVER ACTUATOR	1	SA
5.3-8	JB97-02105A	MEA UNIT-BRACKET LF	1	SA



## 5.4 Bracket LF Exploded View





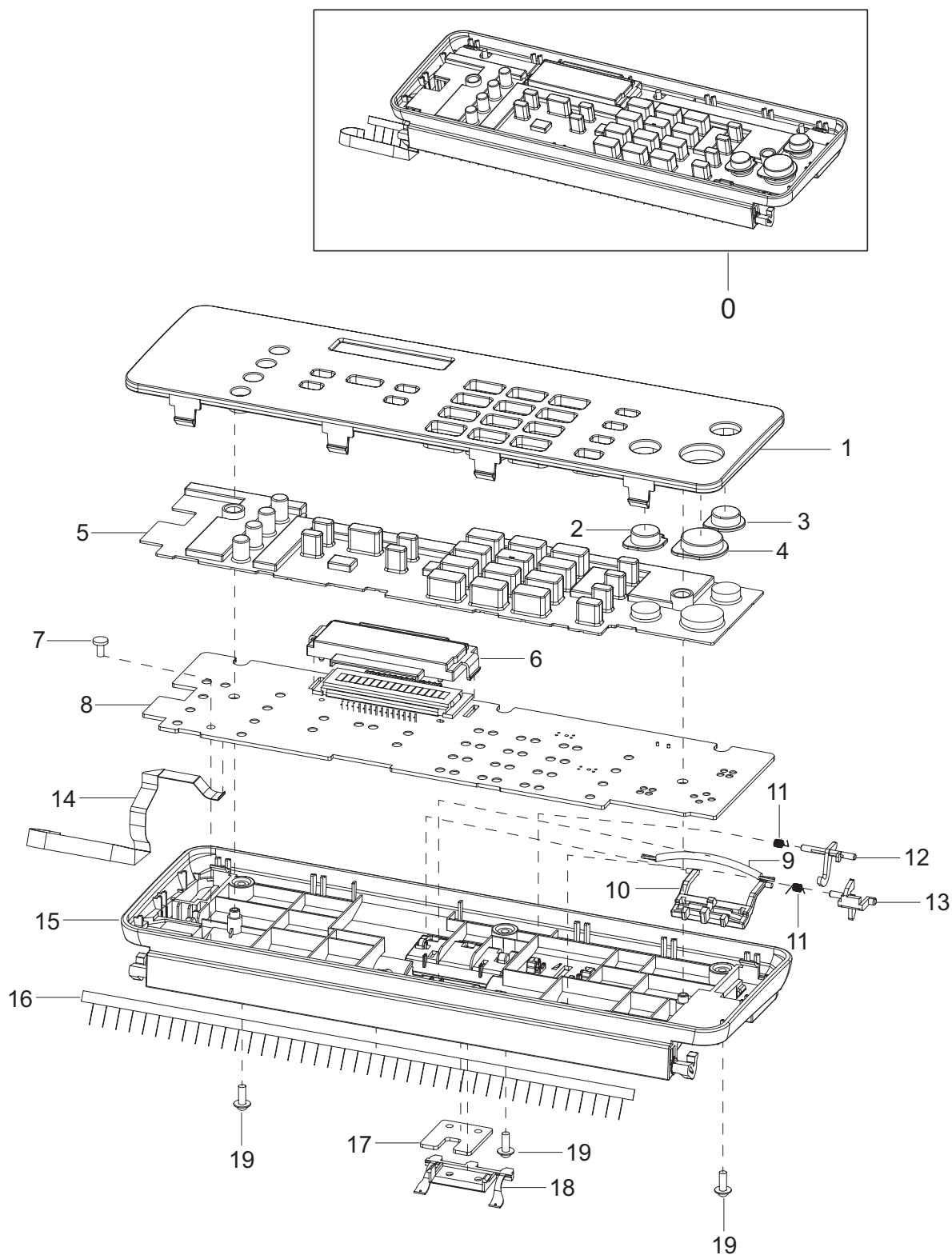
## Bracket LF List

SA : Service Available

SA : Service available SNA : Service not available

Drawer#	SEC_CODE	DESCRIPTION	Q'ty	Service
5.4-0	JB97-02105A	MEA UNIT-BRACKET LF	1	SA
5.4-1	JB61-00485A	BRACKET-MOTOR	1	SNA
5.4-2	JC72-41105A	PMO-BUSHING DEV	1	SNA
5.4-3	JB66-00337A	LEVER-TRANS	1	SNA
5.4-4	6107-001214	SPRING-ES	1	SA
5.4-5	JB31-00042A	MOTOR STEP	1	SA
5.4-6	6002-000440	SCREW-TAPPING	1	SNA
5.4-7	JB66-00185A	GEAR-M_SWING IDLE 25	1	SA
5.4-8	6031-001555	WASHER-PLAIN	2	SNA
5.4-9	6107-001137	SPRING-CS	2	SA
5.4-10	JB66-00345A	CLUTCH-ARM PICKUP	1	SNA
5.4-11	JB66-00336A	LEVER-ASF	1	SNA
5.4-12	JB66-00340A	GEAR-LF 47	1	SNA
5.4-13	JB66-00339A	GEAR-LF 18/65	1	SNA
5.4-14	JB66-00342A	GEAR-IDLE 44	1	SNA
5.4-15	6031-001491	WASHER-PLAIN	2	SNA
5.4-16	JB66-00006A	GEAR-IDLE	6	SNA
5.4-17	JB61-00487A	GUIDE-SWING ADF	1	SNA
5.4-18	JB66-00341A	GEAR-TRANS 25	1	SNA
5.4-19	JB66-00344A	CLUTCH-ARM EXIT	1	SNA
5.4-20	JC66-00498A	GEAR-DEVE IDEL_Z24	3	SNA
5.4-21	JB66-00343A	GEAR-TX 20/14	1	SNA
5.4-22	JB66-00005A	GEAR-TRANS	1	SNA
5.4-23	JB61-70922A	SPRING ETC-CLUTCH	2	SA
5.4-24	JF72-41293A	PMO-GEAR CLUTCH	2	SNA
5.4-25	JB61-00488A	GUIDE-SWING TX	1	SNA

## 5.5 OPE (SF-370,371P Type) Exploded View



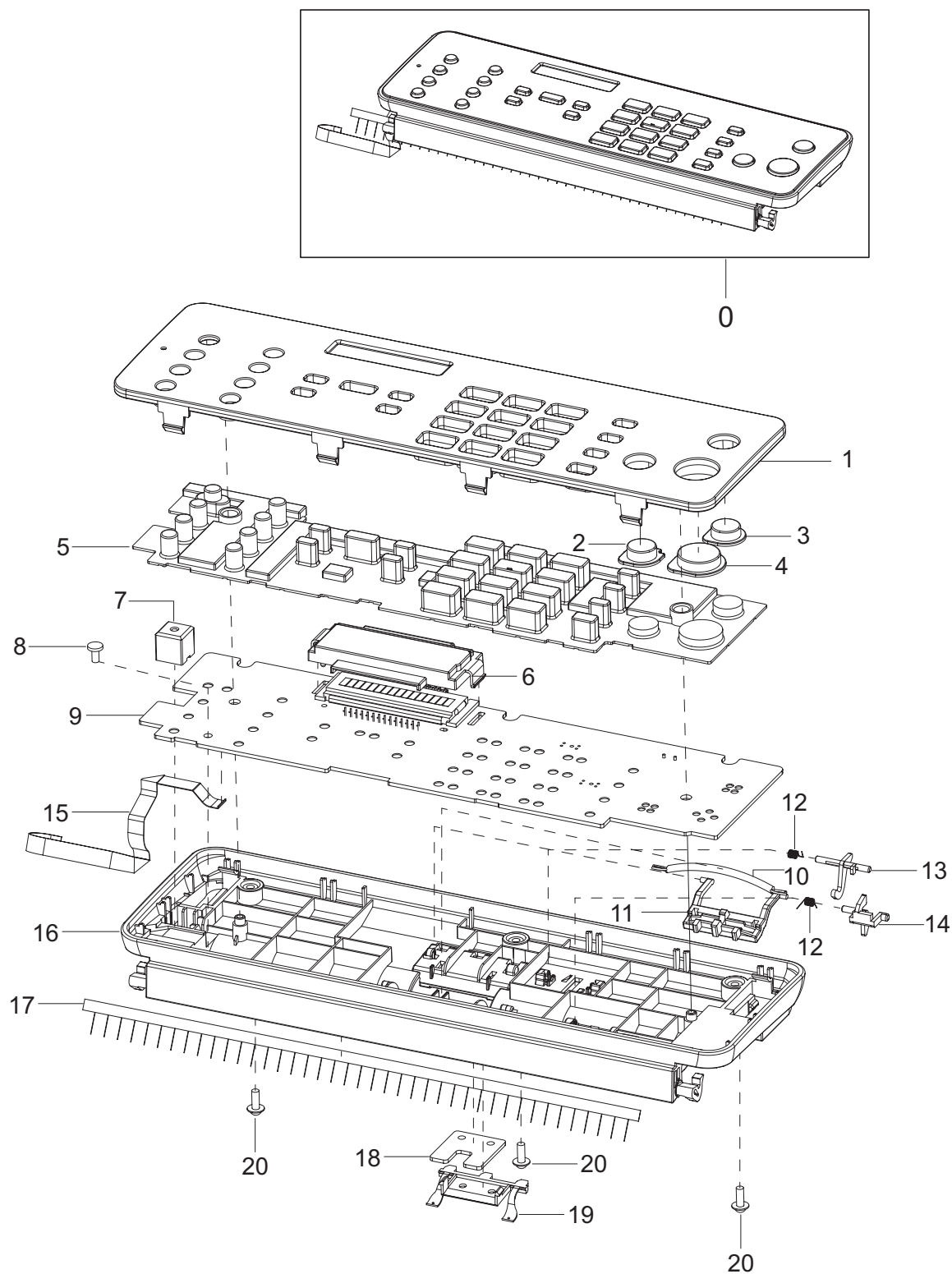
## OPE(SF-370/371P) Parts List

SA : Service Available

SA : Service available SNA : Service not available

Drawer#	SEC_CODE	DESCRIPTION	Q'ty	Service
5.5-0	JB96-01730D	ELA UNIT-SCAN	1	SA
5.5-0	JB96-01734A	ELA UNIT-SCAN(T) SF-375T		
5.5-1	JB63-00455D	COVER-OPE BASIC, SF-370	1	SNA
5.5-1	JB63-00455F	COVER-OPE BASIC, SF-371P	1	SNA
5.5-2	JB64-00101A	KEY-M_STOP	1	SA
5.5-3	JB64-00099A	KEY-M_COPY	1	SA
5.5-4	JB64-00100A	KEY-M_START	1	SA
5.5-5	JB73-00132A	RUBBER-CONTACT BASIC	1	SNA
5.5-5	JB73-00133B	RUBBER-CONTACT BASIC, SF-371P	1	SNA
5.5-6	JB63-00456A	COVER-LCD	1	SNA
5.5-7	6003-000261	SCREW-TAPTITE	1	SNA
5.5-8	JB92-01326A	PBA SUB-OPE	1	SA
5.5-9	JG70-40514A	ICT-SPRING COIL	1	SA
5.5-10	JB61-00352A	SUPPORT-M-ADF RIB	1	SNA
5.5-11	JB61-00107A	SPRING ETC-LEVER SENSOR	2	SA
5.5-12	JB66-00168A	LEVER-M_SENSOR DOC	1	SA
5.5-13	JB66-00169A	LEVER-M_SENSOR SCAN	1	SA
5.5-14	JB39-00278A	FLAT CABLE	1	SNA
5.5-15	JB61-00484A	FRAME-UPPER	1	SNA
5.5-16	JC67-00055A	BRUSH-ANTISTATIC 531P	1	SA
5.5-17	JB73-00100A	RUBBER-ADF	1	SA
5.5-18	JB61-00143A	HOLDER-M_RUBBER	1	SA
5.5-19	6002-000440	SCREW-TAPPING	3	SNA

## 5.6 OPE (SF-375TP Type) Exploded View



## OPE(SF-375TP) Parts List

SA : Service Available

SA : Service available SNA : Service not available

Drawer#	SEC_CODE	DESCRIPTION	Q'ty	Service
5.6-0	JB96-01734G	ELA UNIT-SCAN(TAD)	1	SA
5.6-1	JB63-00454G	COVER-OPE TAD	1	SNA
5.6-2	JB64-00101A	KEY-M_STOP	1	SA
5.6-3	JB64-00099A	KEY-M_COPY	1	SA
5.6-4	JB64-00100A	KEY-M_START	1	SA
5.6-5	JB73-00132A	RUBBER-CONTACT TAD	1	SNA
5.6-6	JB63-00456A	COVER-LCD	1	SNA
5.6-7	GB72-40770A	PMO-MIC. ADAPTER	1	SNA
5.6-8	6003-000261	SCREW-TAPTITE	1	SNA
5.6-9	JB92-01326B	PBA SUB-OPE	1	SA
5.6-10	JG70-40514A	ICT-SPRING COIL	1	SA
5.6-11	JB61-00352A	SUPPORT-M-ADF RIB	1	SNA
5.6-12	JB61-00107A	SPRING ETC-LEVER SENSOR	2	SA
5.6-13	JB66-00168A	LEVER-M_SENSOR DOC	1	SA
5.6-14	JB66-00169A	LEVER-M_SENSOR SCAN	1	SA
5.6-15	JB39-00278A	FLAT CABLE	1	SNA
5.6-16	JB61-00484A	FRAME-UPPER	1	SNA
5.6-17	JC67-00055A	BRUSH-ANTISTATIC 531P	1	SA
5.6-18	JB73-00100A	RUBBER-ADF	1	SA
5.6-19	JB61-00143A	HOLDER-M_RUBBER	1	SA
5.6-20	6002-000440	SCREW-TAPPING	3	SNA