



MagicInfo Technical Guide

WES7 OS Recovery User Guide (Ver1.00)

OS, Driver



WES 7 operating system recovery

WES 7 operating system (OS) can be recovered using the following methods:

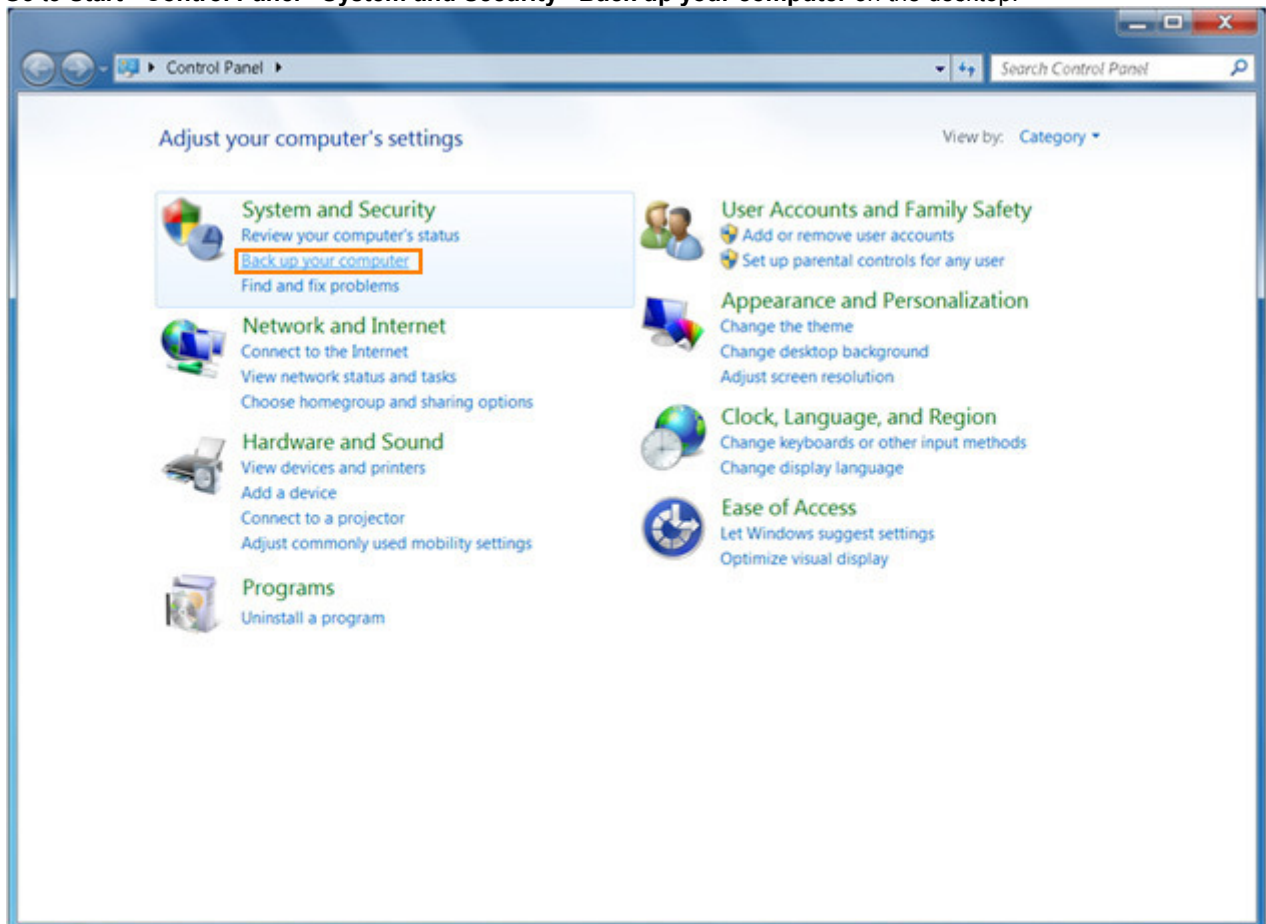
- 1) Recovery to WES 7 OS factory image by inner Storage(SSD) feature
- 2) Restore WES 7 OS factory default by USB

1. Recovery to WES 7 OS factory image by inner Storage(SSD) feature

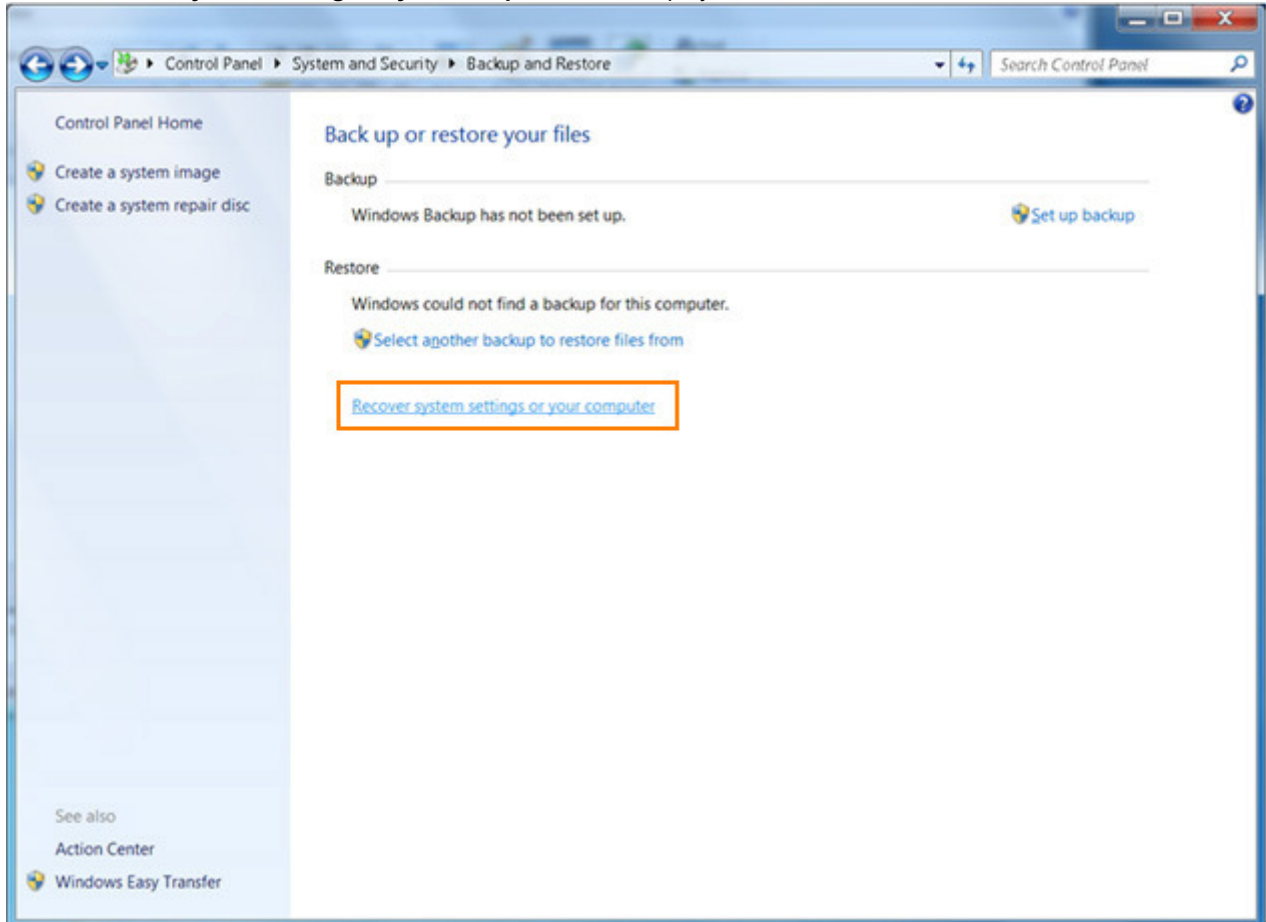
You can restore the system to the default factory settings. Access recovery mode and recover the system as shown below.

Option 1 to access recovery mode: Access using the menus in the Control Panel

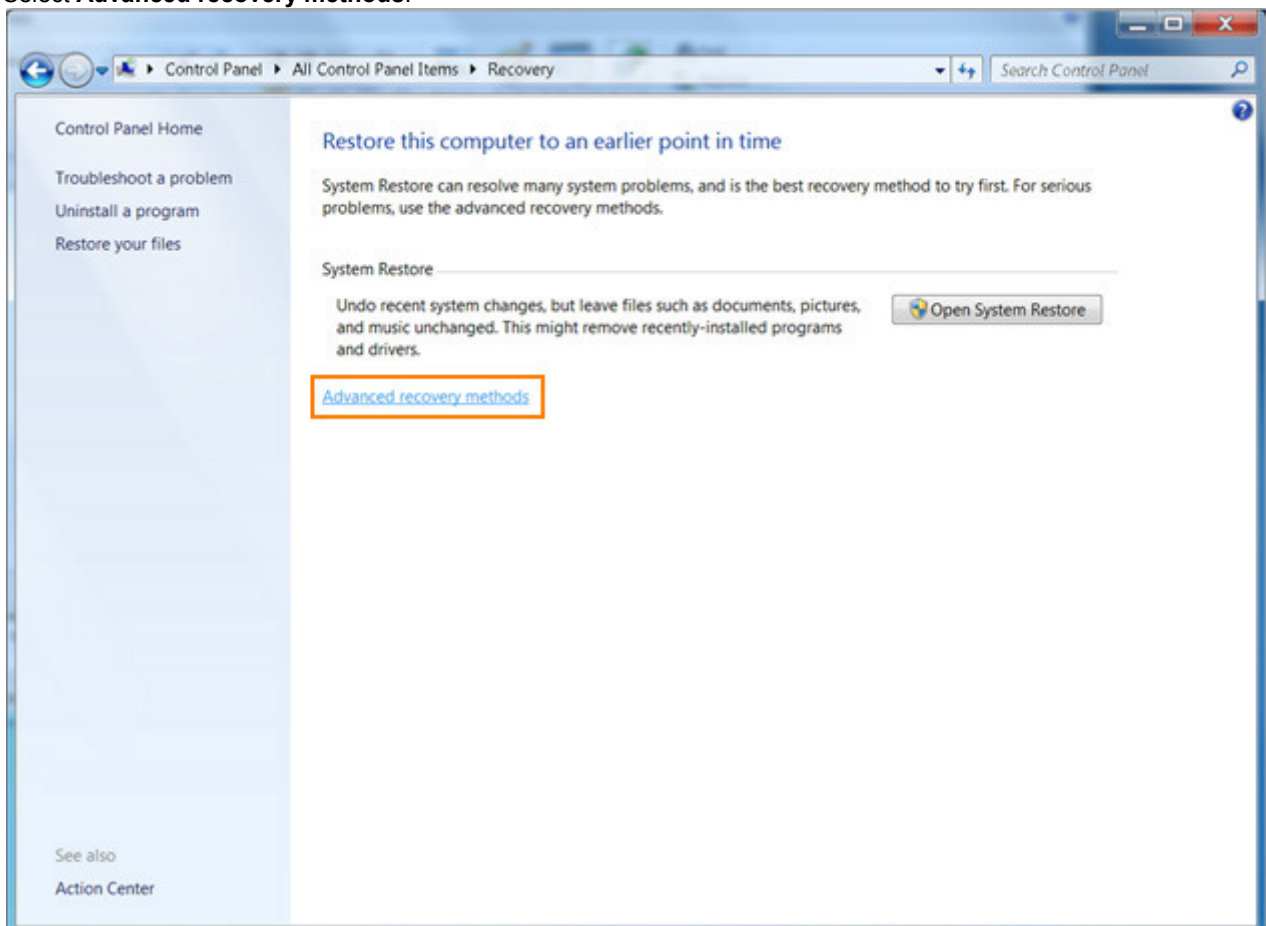
1. Go to **Start - Control Panel - System and Security - Back up your computer** on the desktop.



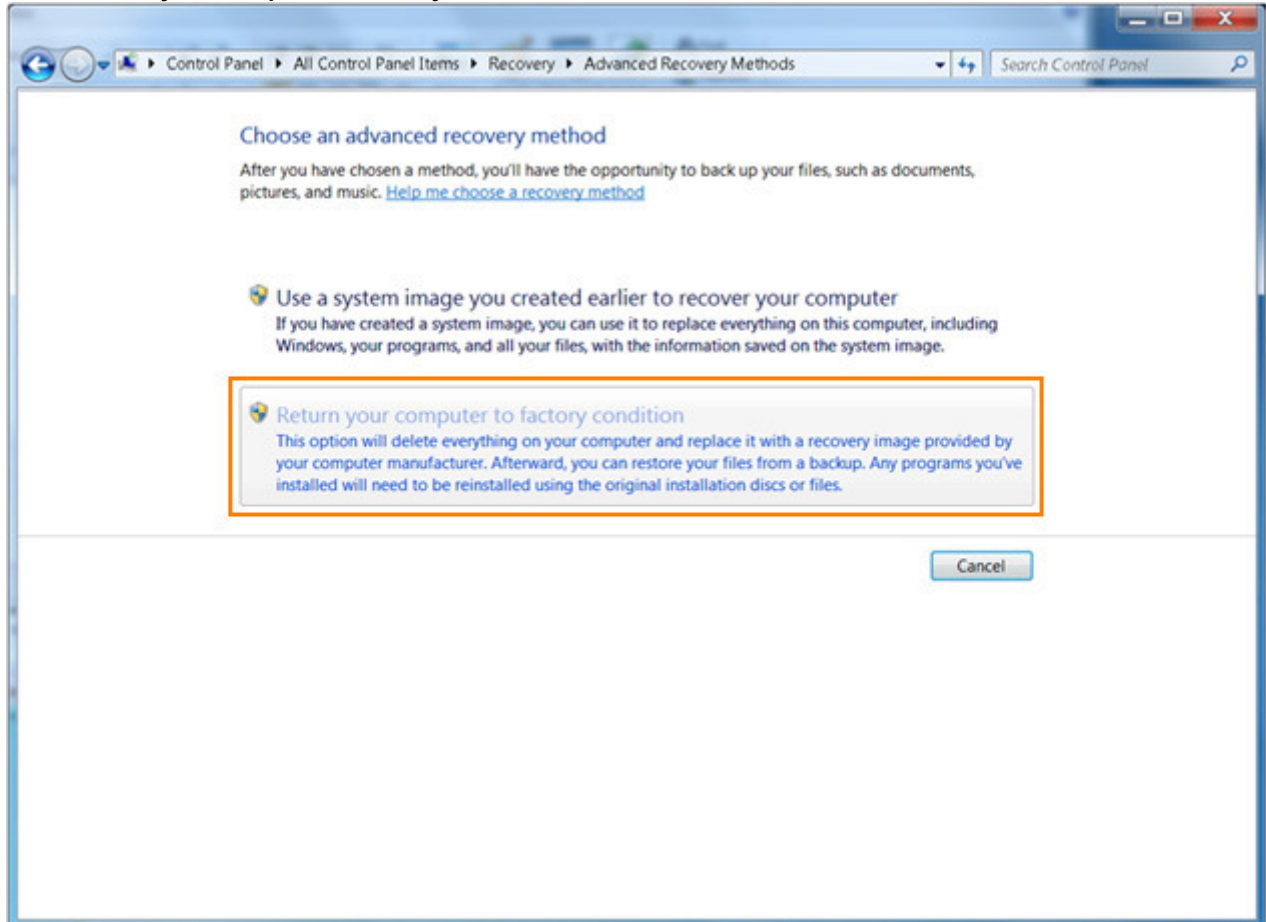
2. Select **Recover system settings or your computer** in the displayed screen.



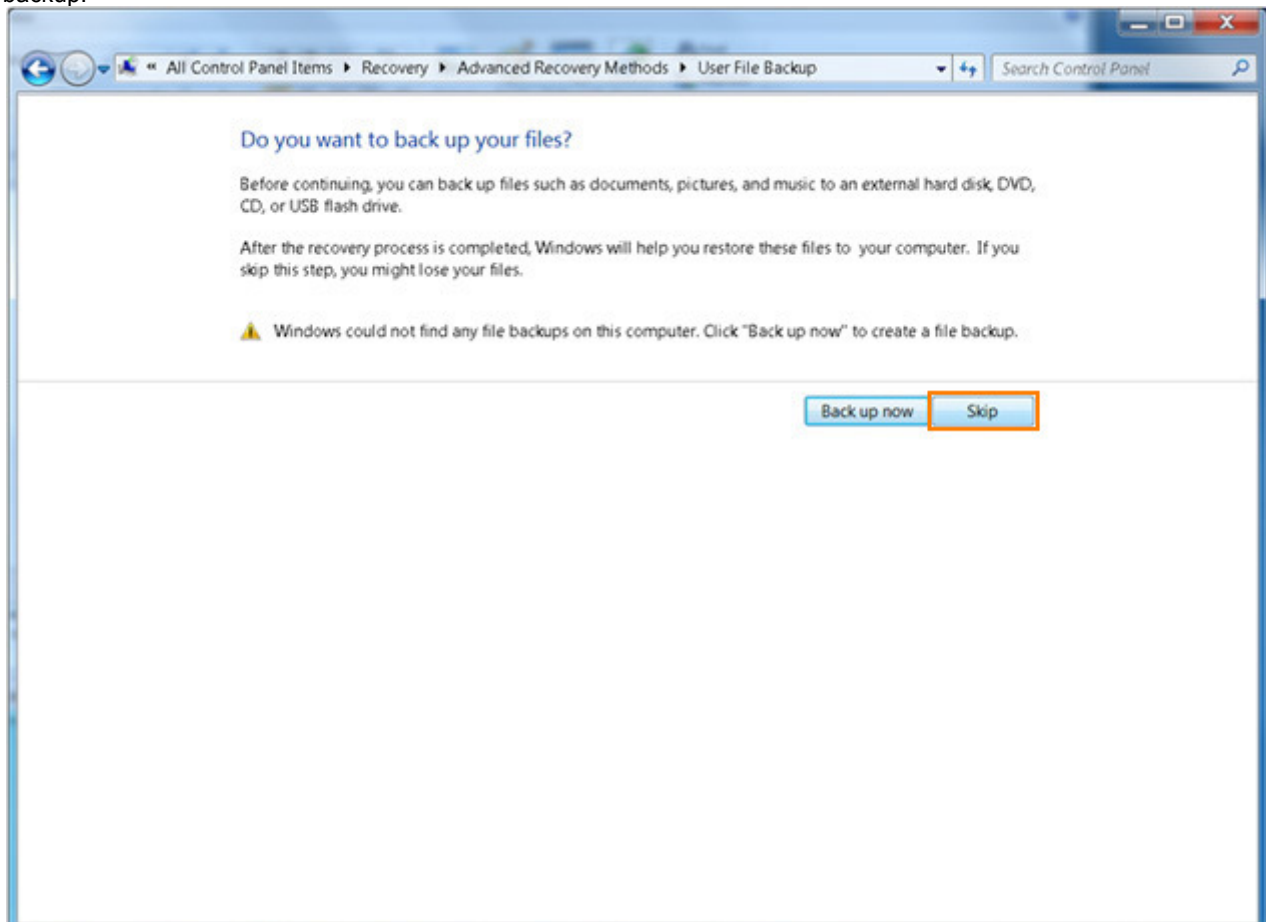
3. Select **Advanced recovery methods**.



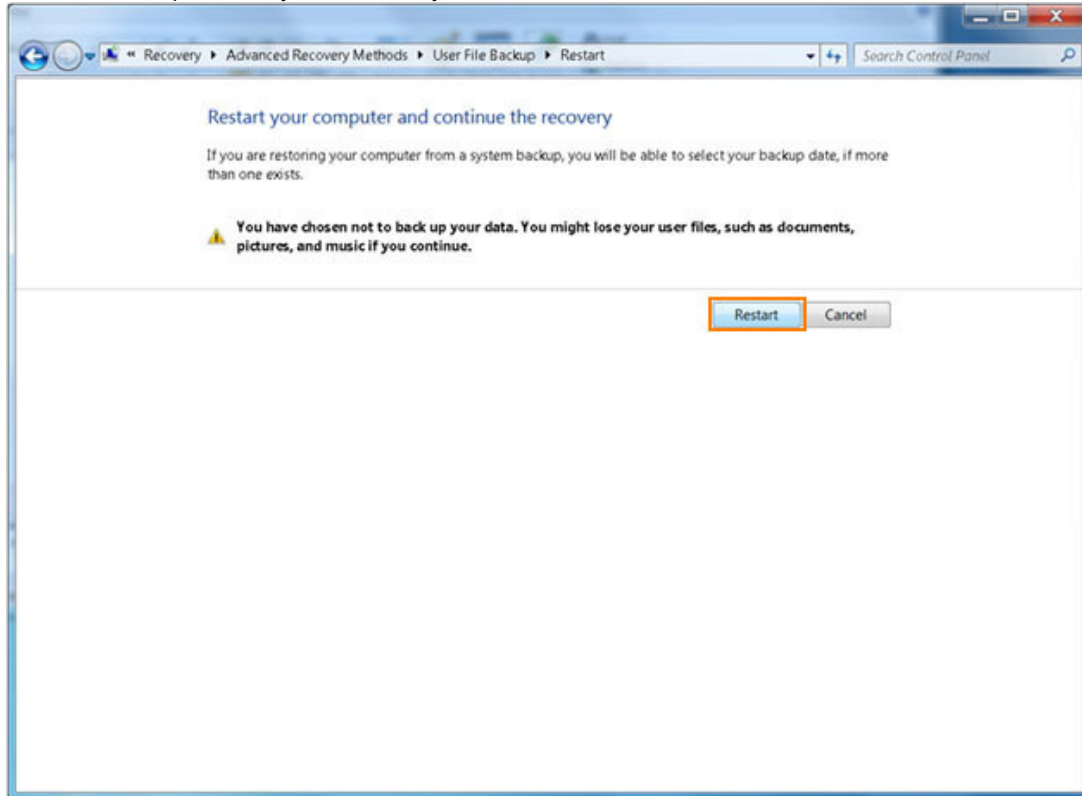
4. Select **Return your computer to factory condition**.



5. You will be prompted to confirm if you want to back up your files. Click **Skip** to proceed with system recovery without backup.



6. Restart the computer for system recovery. Click **Restart**.

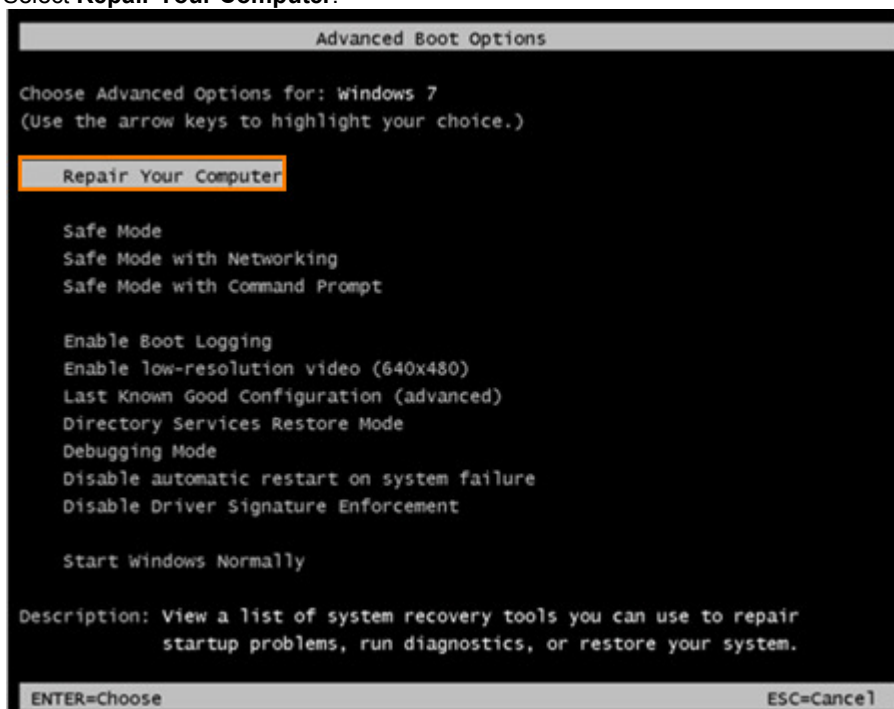


Option 2 to access recovery mode: Access when the computer boots up

1. Press F1 or F8 immediately after the computer boots up.

Note that the system will boot in standard mode if you do not press F1 or F8 immediately after the computer boots up.

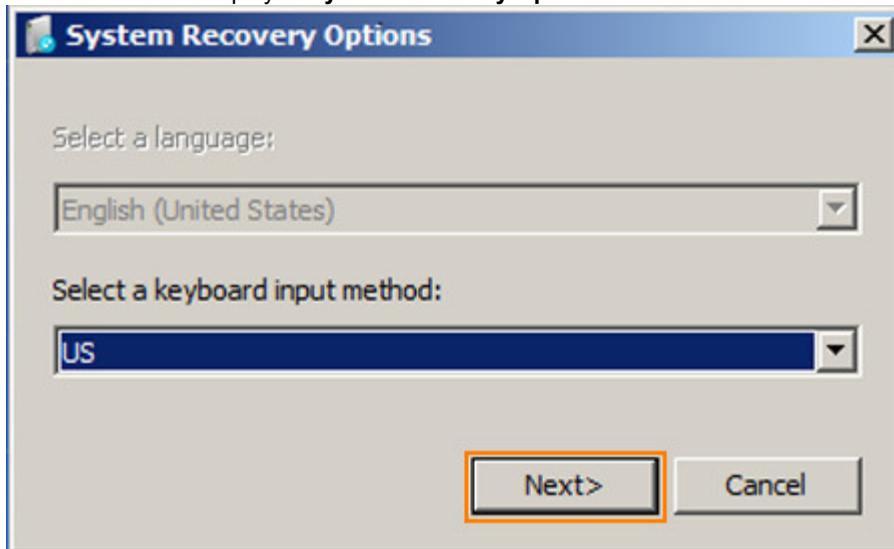
2. If you have accessed recovery mode by pressing F8, the **Advanced Boot Options** screen will appear as shown below. Select **Repair Your Computer**.



Recovering the system

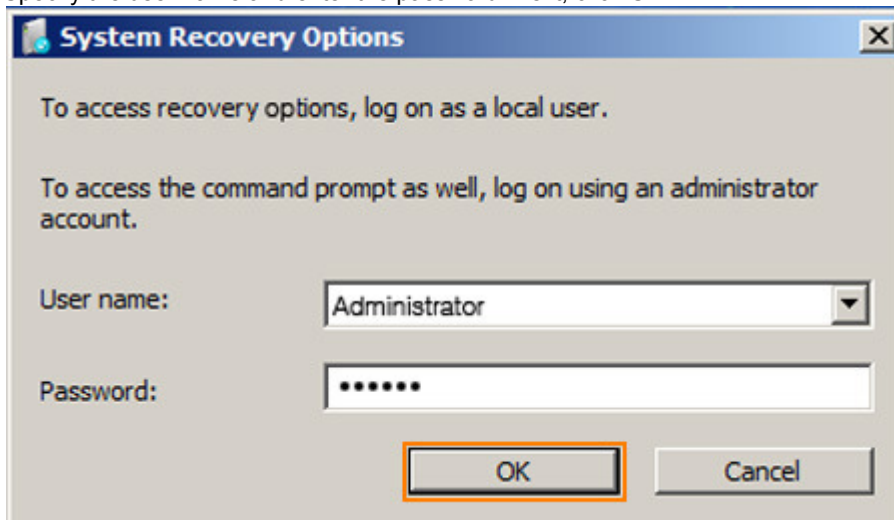
After accessing recovery mode using one of the previously mentioned methods, recover the system.

1. Select **Next** in the displayed **System Recovery Options** screen.



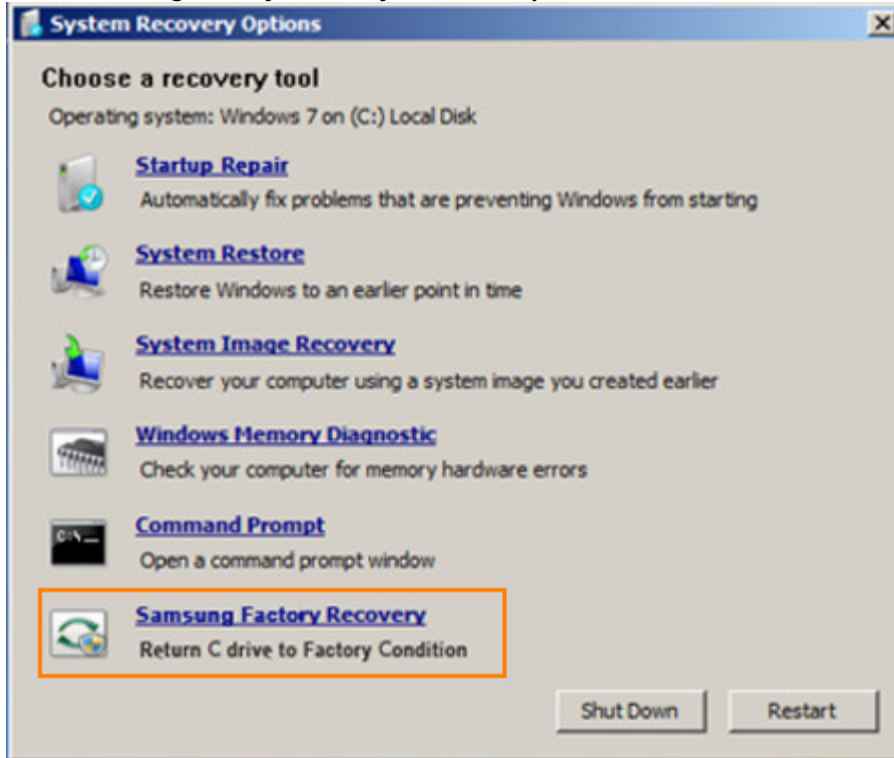
Recovery will be performed in English only.

2. Specify the user name and enter the password. Next, click **OK**.

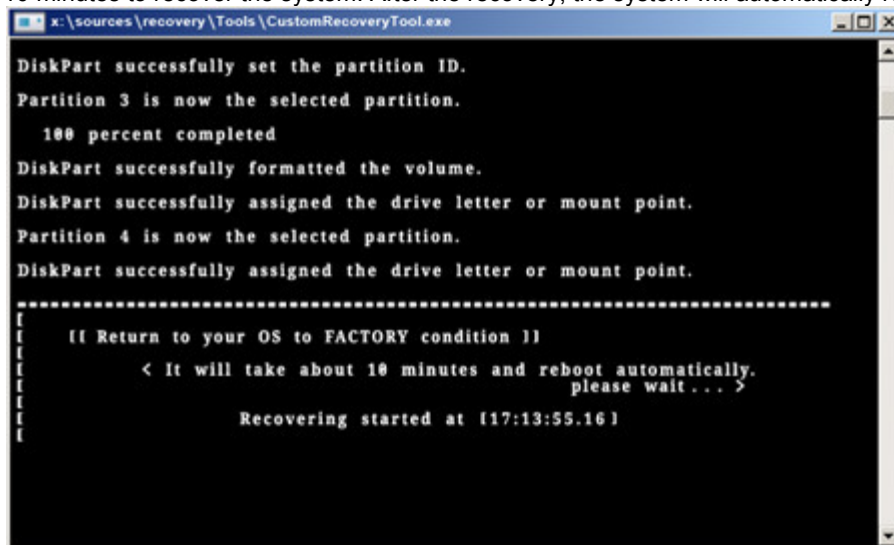


The default user name is Administrator.

3. Select **Samsung Factory Recovery** as a recovery tool.



4. The system will be restored to the default factory settings. The recovery will be performed automatically. It will take about 10 minutes to recover the system. After the recovery, the system will automatically restart.



2 Restore WES 7 OS factory default by USB

If the recovery of WES 7 fails with OS image inner SSD, you may restore the default factory settings of the operating system.

Recover the system as explained below:

2.1 Create a WinPE bootable USB

2.1.1 Why we need a WinPE environment

The applications ImageX.exe and diskpart allow us to manage Win7-based OS images.

ImageX and diskpart do not run on DOS systems and require WinPE or Windows7 environments.



To create a WinPE bootable USB, you can use any WinPE or Win7 environment which you may already have in place.

2.1.2 Using WinPEUSBMaker tool

The WinPEUSBMaker tool is available for: (A) AMD64 and (B) X86 architecture.

Select the correct tool according to your OS image's architecture.

(A) AMD64 platform : SUR40 (Surface, Windows 7 Professional 64bit)

(B) X86 platform : SBBA, SIM (Windows Embedded Standard 7 32bit)

2.1.2.1 Requirements

Copy a mandatory set of files for each OS architecture into a WinPE data folder.

These files ought to be located on one USB drive only

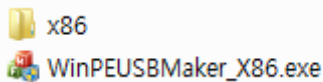
The USB will be formatted.

WinPE files require 200MB, but we recommend over 8GB available space

The OS image will be saved on the USB

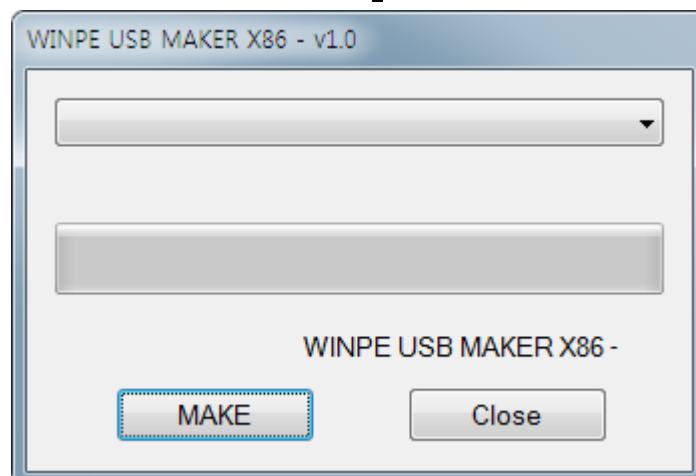
WinPEUSBMaker_[%Processor_Architecture%].exe

- [%Processor_Architecture%]WISOW

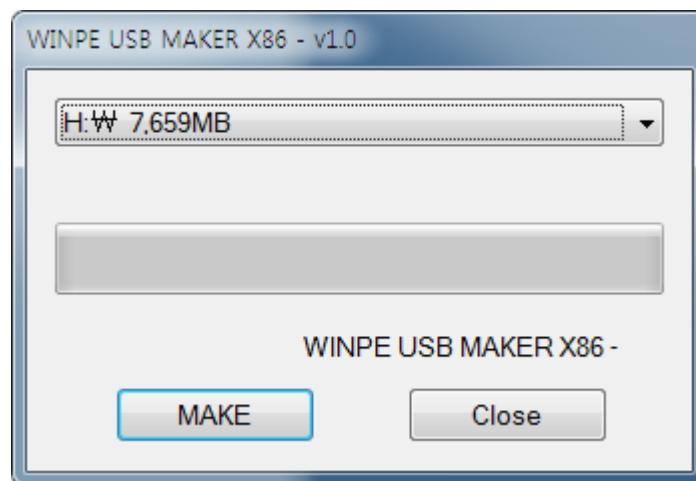
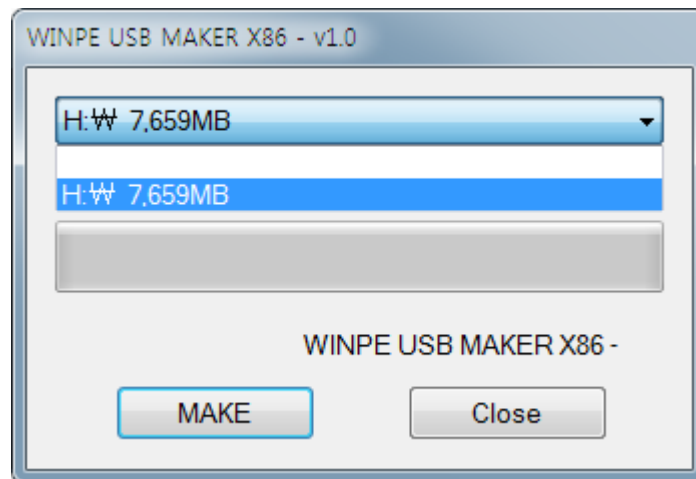


2.1.2.2 Run WinPEUSBMaker

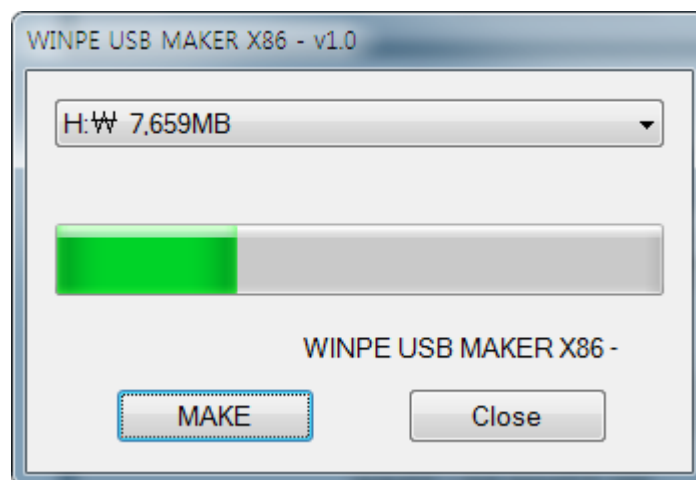
- Connect USB drive and run WinPEUSBMaker_x86.exe



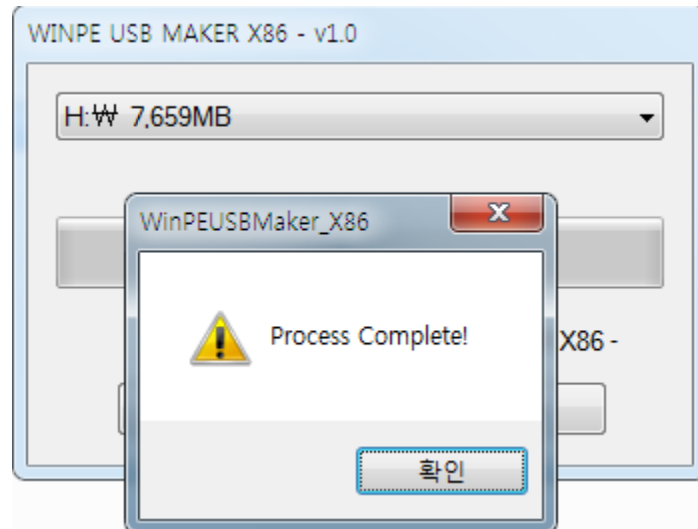
Locate your USB drive in the drop down list



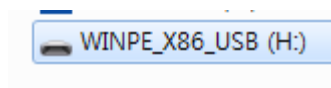
Select USB drive and click [MAKE] button.



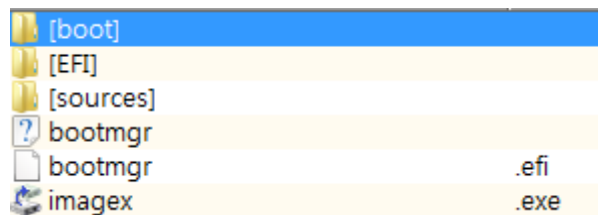
Progress bar is displayed during process.



"Process Complete!" message appears.



USB's label is set to "WINPE_X86_USB"



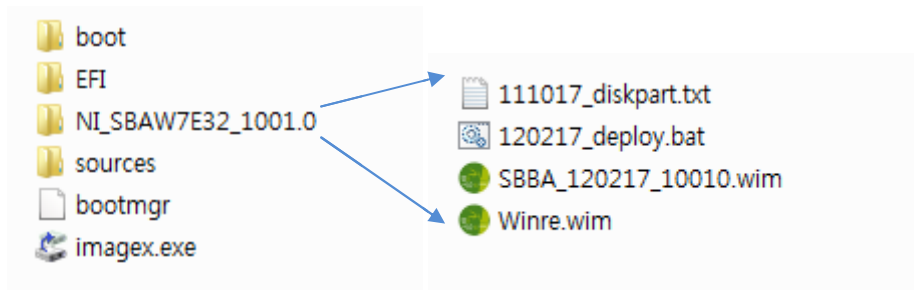
You can see USB's contents.

Now you can boot to WinPE from the USB drive.

2.2 Copy OS image to USB

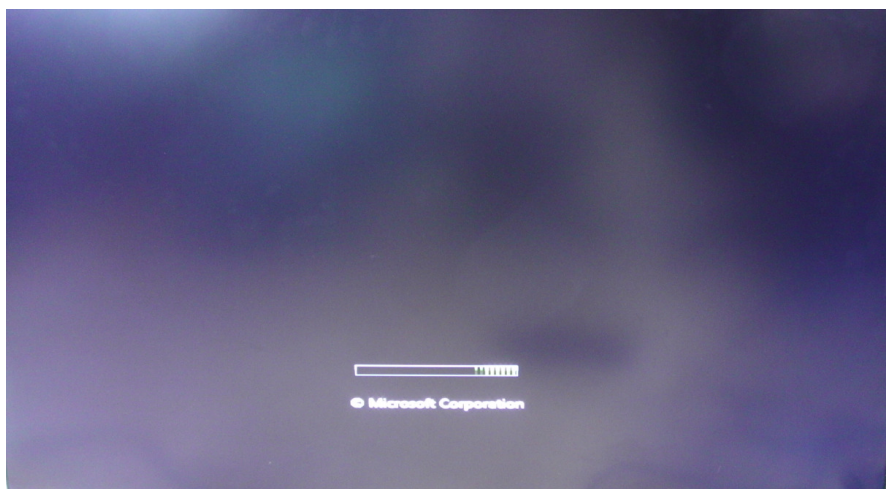
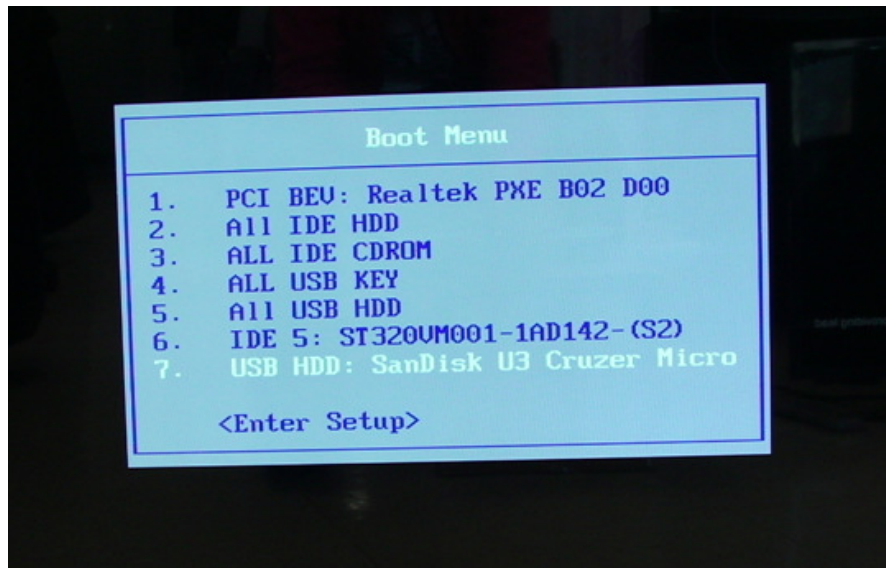
2.2.1 Copy OS image and related files to USB.

(for example, make a folder and copy xxx.txt, xxx.bat, xxx.wim, WinRe.wim)

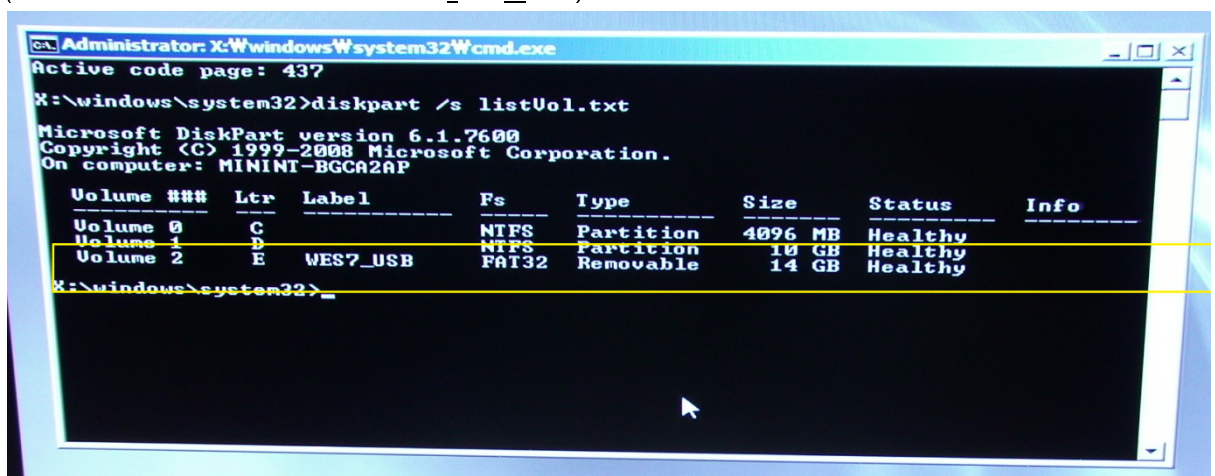


2.2.2 Connect the USB and restart the local machine to boot into USB (using F2 / F10)

You may have to amend the boot sequence in the BIOS system as shown below:



- 2.2.3 When booting is completed, such as the following menu appears:
(You can show Label name is WINPE_X86__USB)



- 2.2.4 Move to OS image folder and execute xxxxxx_deploy.bat script file.

```

Administrator: X:\Windows\system32\cmd.exe
X:\windows\system32>E:
E:\>dir
Volume in drive E is WES7_USB
Volume Serial Number is 181A-5CC8

Directory of E:\

2009-07-13  ?? 06:39           383,562 bootmgr
2009-07-14  ?? 07:10           481,680 imageX.exe
2011-11-02  ?? 09:01             <DIR> boot
2011-11-02  ?? 09:01             <DIR> EFI
2011-11-02  ?? 09:01             <DIR> sources
2011-10-24  ?? 07:52           405 111012_diskpart.txt
2011-11-02  ?? 02:51           564 11102_deploy.bat
2011-11-02  ?? 02:43    3,899,175 826 cdda_111007.wim
2011-11-02  ?? 01:22    164,062,663 Winre.wim
6 File(s)      4,064,104,700 bytes
3 Dir(s)      11,797,471,232 bytes free

E:\>
E:\>
E:\>
E:\>11102_deploy.bat

```

2.2.5 Deployment is automatically proceeding.

Reboot target.

```

Administrator: X:\Windows\system32\cmd.exe
Successfully exported image #9.
Total elapsed time: 14 sec

F:\SUR40_111123>copy WinRE_110512.wim R:\Recovery\WindowsRE\winre.wim
1 file(s) copied.

F:\SUR40_111123>C:\Windows\System32\Reagentc.exe /setreimage /path R:\Recovery\W
indowsRE\ /target C:\Windows /bootkey 3b00
Directory set to: \\?\GLOBALROOT\device\harddisk0\partition2\Recovery\WindowsRE
REAGENTC.EXE: Operation successful

F:\SUR40_111123>C:\Windows\System32\Reagentc.exe /setosimage /path R:\FactoryIma
ge\ /target C:\Windows
Directory set to: \\?\GLOBALROOT\device\harddisk0\partition2\FactoryImage
REAGENTC.EXE: Operation successful

F:\SUR40_111123>
F:\SUR40_111123>exit

```